

ELEV8 H-S
ELEV8 H



CONSUMER SAFETY INFORMATION

1. Service or modification by untrained personnel is unsafe, please contact your local RST authorized distributor or RST customer service center for service or technical information regarding the seatpost.
2. RST recommends checking the seatpost for defects or damage before the riding. All bolts and other fasteners are to be torqued to the recommended specifications before the seatpost is used!

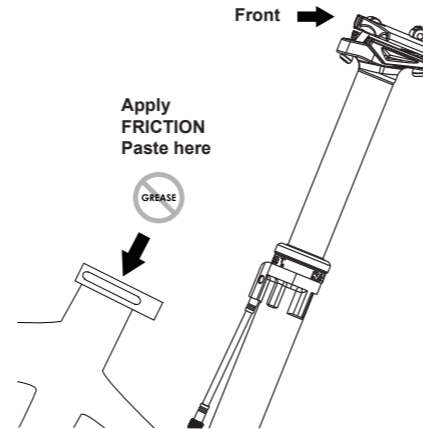
WARRANTY INFORMATION

Any RST seatpost found by the service center or factory, to be defective in materials and/or workmanship within two year from the date of purchase will be repaired or replaced at the option of the manufacturer, free of charge, when received at the factory or service center with proof of purchase and is deemed a warranty. This warranty does not cover any seatpost that has been subject to misuse or abuse, including but not limited to, any breakage, bending, or damage cause by crashes and/or assembly, improper maintenance, or other excessive, improper or abnormal conditions. This warranty does not cover paint damage and normal abrasion after installation. Any modifications or alterations made by the user will render the warranty null and void. This warranty is expressly in lieu of all other warranties, and any implied are limited in duration to the same duration as the expressed warranty herein. RST shall not be liable for any incidental or consequential damages. In the event that a product needs to be replaced and is discontinued or not available, RST reserves the right to replace the product with one of equal or greater value, no credit or refund will be issued. If for any reason, warranty work is necessary, return the seatpost to the place of purchase. If you have any question about the products please contact your local RST distributor or service center.

1

CAUTION READ BEFORE INSTALLATION

- Needs to be ensured that the frame and seat tube are clean and free of any debris, oil, grease or other objects.
- Friction paste should be used in the interface between the seat post and the seat tube. Do not use grease.



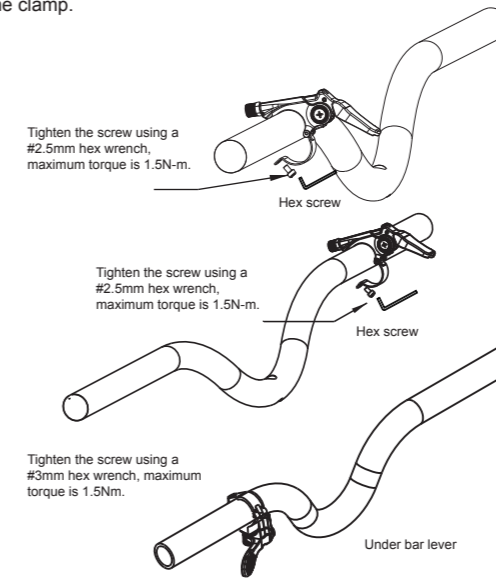
2

REMOTE LEVER INSTALLATION

Remove the screw at the bottom of the lever using a #2.5mm hex wrench and open the clamp. Fit the lever on the handle bar at the position according to your personal preferences and cable routing. Close the clamp and reinstall screw.

Caution: The maximum torque for the screw needs to be 1.5Nm.

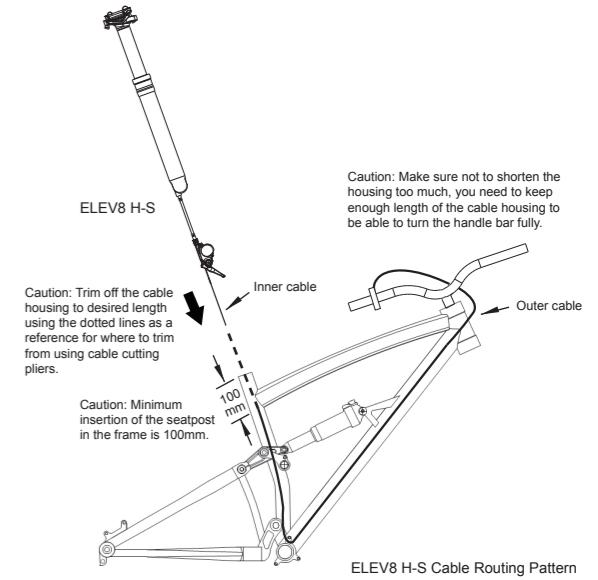
For the under bar shifter please use the #3mm hex wrench to open the clamp.



3

OUTER CABLE ROUTING INSTALLATION (ELEV8 H-S)

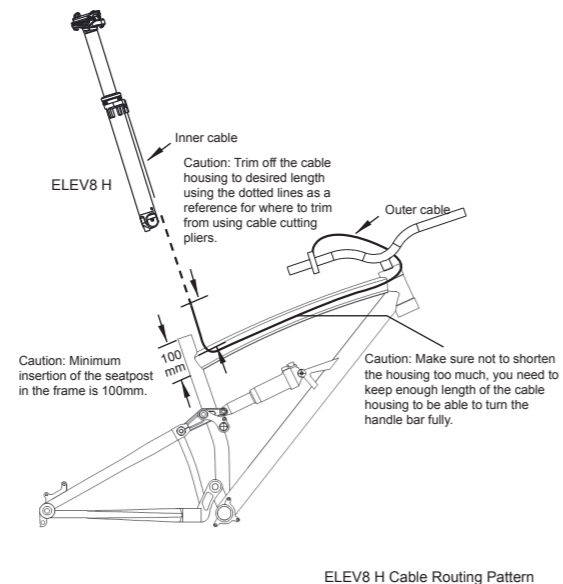
Insert the outer cable housing according to the routing pattern of your frame. Trim off the extra outer cable, and make sure the outer cable is not interfering the steering. Do not fix the cable on the frame yet. Note: When trimming the housing to length make sure that the inner cable is NOT inserted into the housing.



4

OUTER CABLE ROUTING INSTALLATION (ELEV8 H)

Referring the installation to P4

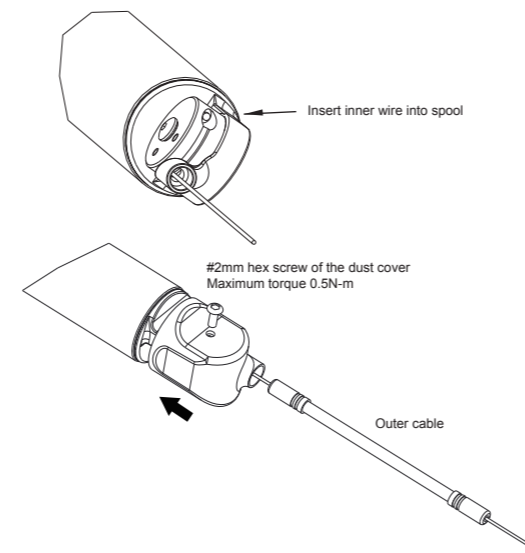


5

INNER CABLE ROUTING INSTALLATION (ELEV8 H-S)

ELEV8 H-S

Insert the inner cable into the cable spool at the bottom of the seatpost referring to the graphic and assemble the dust cover using #2.5mm hex wrench. Insert the inner cable into the outer cable housing in the frame.



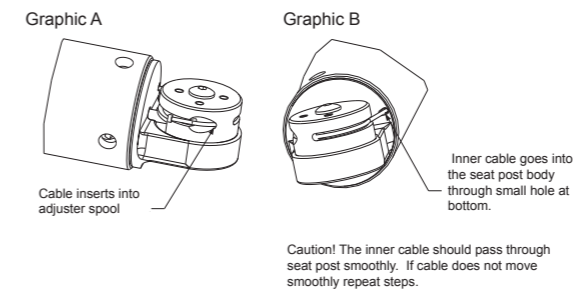
6

INNER CABLE ROUTING INSTALLATION (ELEV8 H)

ELEV8 H

Caution! It is critical that all steps are followed correctly. Remove the Guide Bolt, O-ring and Glide ring using a 6mm hex wrench (see graphic C). Insert the inner cable into the cable spool (graphic A). Next insert inner cable in the hole at the bottom of the seatpost. Make sure that the inner wire is aligned in the groove of the cable spool (graphic B). Carefully push the inner cable into the seatpost until it comes out from the hole on left. After the inner cable comes out from left side hole, guide cable into right side hole using a pick or a small screw driver. Now re-assemble the O-ring, guide ring, and bolt (graphic C). The inner cable should now be riding on the guide ring. Now assemble the dust cover.

NOTE: RST ELEV8 H will be delivered with inner cable already installed, instructions only apply if cable is missing or needs to be changed.

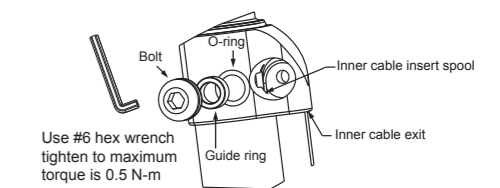


7

INNER CABLE ROUTING INSTALLATION (ELEV8 H)

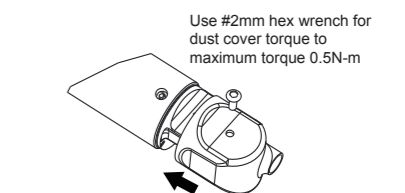
Graphic C

GGuide cable back through right side hole and now re-assemble the O-ring, guide ring, and bolt.



Use #6 hex wrench tighten to maximum torque is 0.5 N-m

Caution! making sure the cable is riding on outside of guide ring.



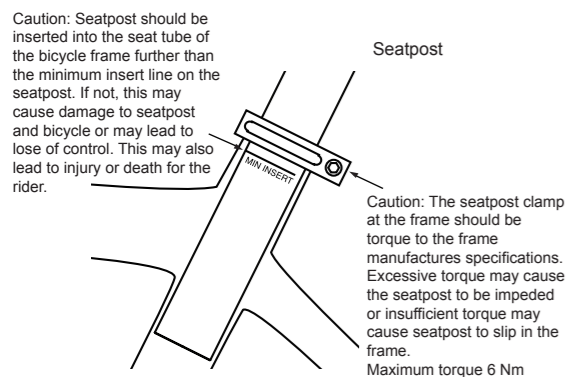
8

RST

RST GREENERGY TECH.CO.,LTD.
www.rstsuspension.com

SEATPOST INSTALLATION

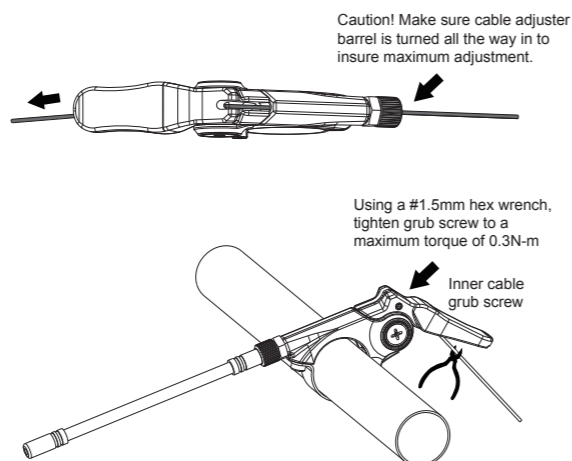
After applying friction paste to the frame of the bicycle and making sure that the outer cable housing is attached at the bottom of seatpost (Stealth Only). Slide the seatpost into frame to the height required.



9

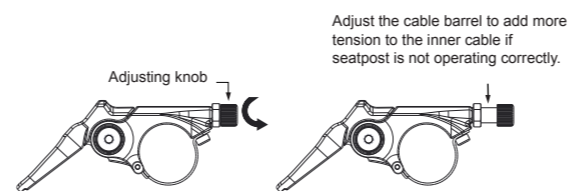
REMOTE LEVER INSTALLATION & ADJUSTMENT

Insert the inner cable through the remote lever adjuster barrel making sure the outer cable is fixed tightly to the adjuster barrel after cable has been pulled through the lever. Now tighten the grub screw at the side of the remote lever with 1.5mm hex wrench. Trim off the extra inner cable and attach the cable end cap. Now you can test the seat post by pressing the lever down and pushing down on the seat. If not working correctly try adding tension to the cable by turning the barrel adjuster.



10

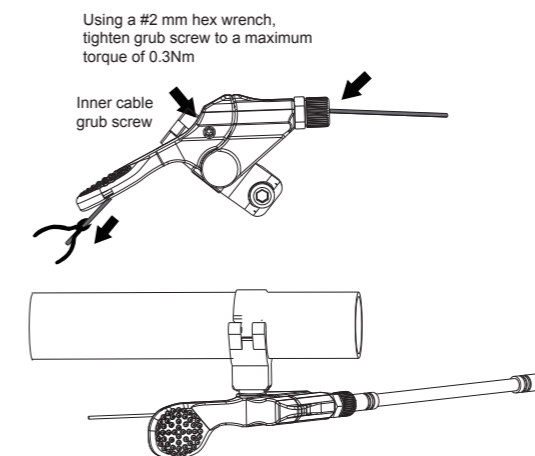
REMOTE LEVER INSTALLATION & ADJUSTMENT



11

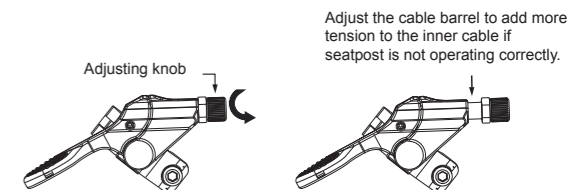
REMOTE LEVER INSTALLATION & ADJUSTMENT (Under bar lever)

Insert the inner cable through the remote lever adjuster barrel making sure the outer cable is fixed tightly to the adjuster barrel after cable has been pulled through the lever. Now tighten the grub screw at the side of the remote lever with #2 mm hex wrench. Trim off the extra inner cable and attach the cable end cap. Now you can test the seat post by pressing the lever down and pushing down on the seat. If not working correctly try adding tension to the cable by turning the barrel adjuster.



12

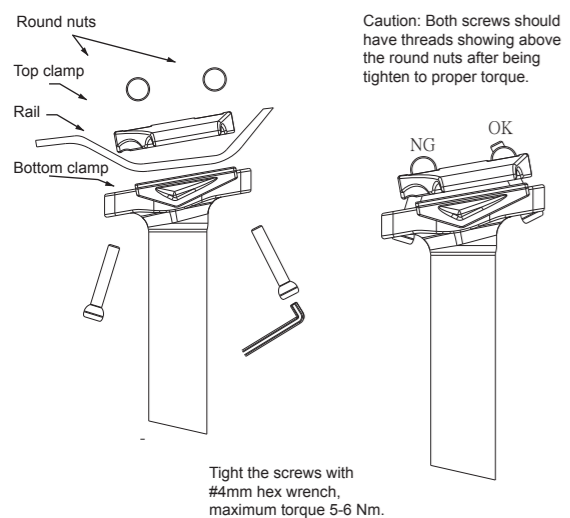
REMOTE LEVER INSTALLATION & ADJUSTMENT



13

SADDLE INSTALLATION

Make sure the seatpost is adjusted so the saddle is pointing in the right direction. Put the rail of the saddle into the grooves of the bottom clamp and put on the top clamp into position on top of the rails. Using a 4mm hex wrench start screwing the bolts into the round nuts in the top clamp. Leave the bolts slightly loose in order to adjust the angle and position of the saddle according to your requirements and then tighten screw evenly. Maximum torque is 5-6N-m.



14

RST ELEV8 LIFTING FUNCTION

Caution! Test the seatpost to insure it is operating properly before being used for the first time on the trail.

- 1.RST ELEV8 H & ELEV8 H-S & ELEV8 A
Dropping: Putting the body weight on the saddle and press the remote lever at the same time adjusting the saddle to the position then release the remote lever.
- 2.RST ELEV8 H & ELEV8 H-S
Hydraulic seatpost could adjust the height at any position as your requirement.
- 3.RST ELEV8 A
Mechanical seatpost would have to make sure that is at the correct position before you release the remote lever.

RST's dropper seatpost ELEV8 is an hydraulic operated seatpost using an emulsion damper cartridge without a IFP piston inside to avoid failures during operation. After being transported lying flat in a box or even operated upside down, oil and air will mix which will lead to play once the seatpost is operated. This play can easily be fixed, the cartridge needs to be bled – please operate the ELEV8 right side up 5-10 times (fully extended to full drop). After bleeding the seatpost will perform correct again and stays adjusted to the selected height without play.

15

SAFETY MAINTENANCE

Caution! Always inspection before riding.
Before every ride, please check if the seatpost is operating properly and screws are torqued to specifications. If a different rider is to use the bicycle please make sure seat is adjusted to their requirements. Please inspect the seatpost for any cracking, excessive abrasions, oil leakage or other damage. If any condition listed exists, the seatpost must not be used.

Regular maintenance
All RST seatpost should be maintained regularly to keep it functioning properly. The seatpost must be cleaned after every ride and serviced as scheduled. Please contact your local dealer or distributor for service.

Elev8 Maintenance	Extreme Conditions	Normal Conditions
Full Service (replace sealhead/ bushing)	6 Months	12 Months
Minor Service (clean/ regrease bearings)	Monthly	6 Months
Cable/ Housing replacement	6 Months	12 Months
Lubricate Sealhead	Monthly	Monthly
Clean Debris Off Post	Every Ride	Every Ride

For more information, please refer to RST website-
www.rstsuspension.com

16

WARNING

If the product is defective due to any disassembly or modifications made by the user, it will render the warranty null and void.

It is forbidden to modify frame design in any way in order to install the seatpost.
This will lead to the warranty of the frame and/or seatpost being null and void. It could also result in frame and seatpost damages and bodily injuries.

17