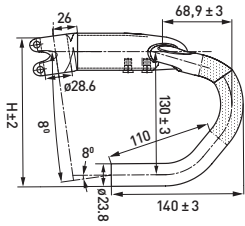
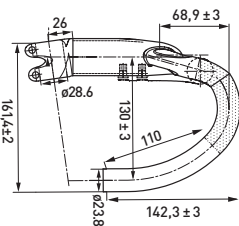


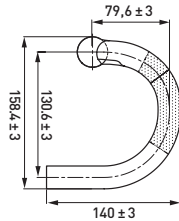
Stealth Evo Anatomic



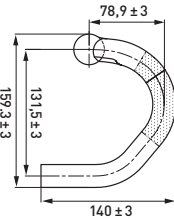
Stealth Evo Compact



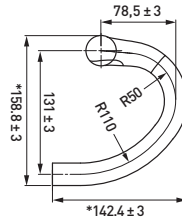
VIBE7S Round  
VIBE Carbon Round



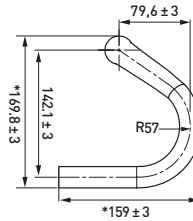
VIBE7S Anatomic  
VIBE Carbon Anatomic  
VIBE Sprint Cavendish



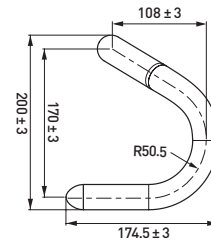
VIBE7S Compact II  
VIBE Carbon Compact II



VIBE7S Track

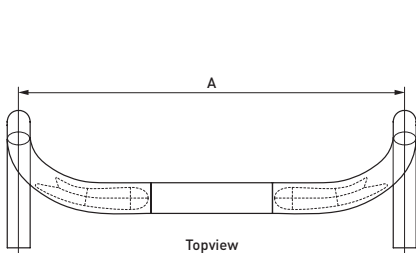


VIBE Track

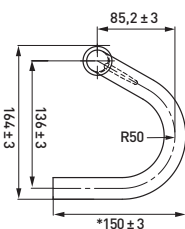


RENNRADLENKER	Stealth Evo Combo	VIBE Sprint - Cavendish Star-Serie	VIBE	VIBE Track	Vibe7S
<b>Material</b>	UD Carbon	AL7050-T6 mit Keilverstärkungen	UD Carbon	3K Carbon	A17050-T6
<b>Form</b>	Anatomisch / kompakt	Anatomisch	Kompakt / rund / anatomisch	Bahn	Rund / anatomisch / kompakt
<b>Kompatibel mit Di2</b>	Ja	Ja	Ja	-	Ja
<b>Zugführung</b>	2-fach	2-fach	2-fach	-	2-fach
<b>Breite [A]</b>	42 - 44 cm [Mitte/Mitte]	40 - 42 - 44 cm [Mitte/Mitte]	40 - 42 - 44 cm [Mitte/Mitte]	40 cm [Mitte/Mitte]	38 - 40 - 42 - 44 cm [Mitte/Mitte]
<b>Durchmesser</b>	1-1/8" [Gabelschaft]	31,8 mm	31,8 mm [Vorbau]	31,8 mm [Vorbau]	31,8 mm [Vorbau]
<b>Gewicht [ab]</b>	410 g	295 g	190 g	375 g	225 g

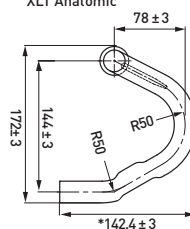
RENNRADLENKER	Vibe 7S Track	PLT CC	PLT	XLT	LT
<b>Material</b>	Leichtmetall	AL7050-DB, umwickelt mit 3K Carbon	Al2014-DB	Al6061-DB	Leichtmetall
<b>Form</b>	Bahn	Anatomisch / kompakt	Rund / anatomisch / kompakt	Rund / anatomisch / kompakt	Anatomisch / kompakt
<b>Kompatibel mit Di2</b>	-	Ja	Ja	-	-
<b>Zugführung</b>	-	Einfach	Einfach	Einfach	Einfach
<b>Breite [A]</b>	40 - 42 cm [Mitte/Mitte]	40 - 42 - 44 cm [Mitte/Mitte]	38 - 40 - 42 - 44 - 46 cm [Mitte/Mitte]	40 - 42 - 44 cm [Mitte/Mitte]	42 - 44 cm [Mitte/Mitte]
<b>Durchmesser</b>	31,8 mm [Vorbau]	31,8 mm [Vorbau]	31,8 mm [Vorbau]	31,8 mm [Vorbau]	26,0 / 31,8 mm [Vorbau]
<b>Gewicht [ab]</b>	275 g	265 g	260 g	285 g	290 g



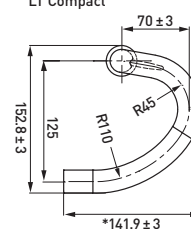
PLT Round  
XLT Round



PLT Anatomic  
PLT CC Anatomic  
XLT Anatomic



PLT Compact II  
XLT Compact  
LT Compact



LT Anatomic

