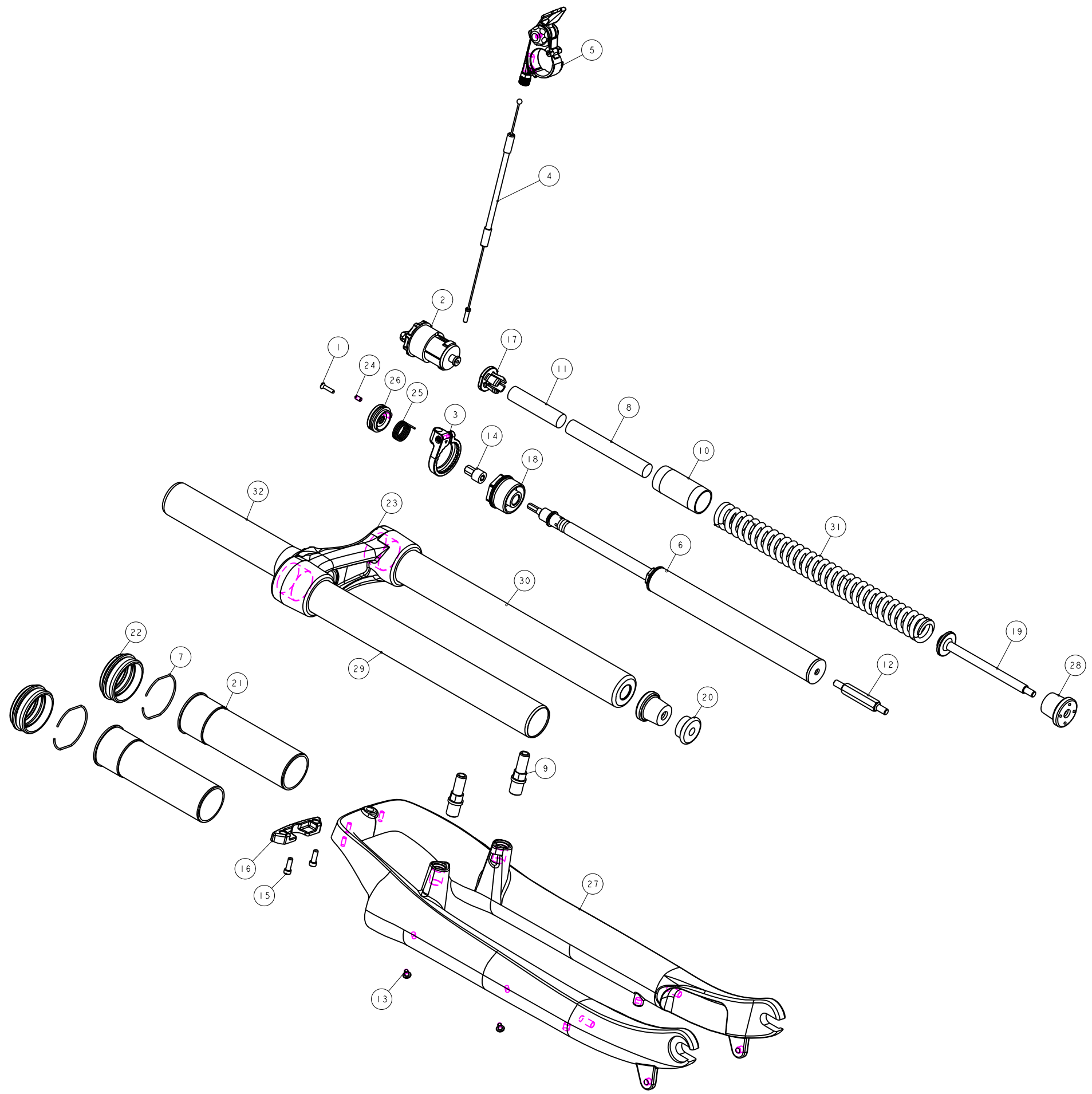


機械加工尺寸一般容許公差					REV.	DATE	DESCRIPTION	CHANGER	CHECK
尺寸	長寬高	尺寸	孔徑	軸徑	△	18 FEB'14	H5GDPFBK12-H5GDPFBK12 H5GDPFBK1-H5GDPFBK3	許智盛	
1 < 10	±0.2	1 < 10	+0.2 -0.2	+0 -0.2					
10.001 < 100	±0.3	10.001 < 100	+0.3 -0.3	+0 -0.3					
100.001 < 250	±0.5	100.001 < 250	+0.5 -0.5	+0 -0.5					
250.001 < 500	±0.8	250.001 < 500	+0.8 -0.8	+0 -0.8					
500 <	±1.3	500 <	+1.3 -1.3	+0 -1.3					



品號第三碼表示年度碼
PGF為2015, PGG為2016, PGH為2017, 以此類推

項目	成品品號	優力膠下座	規格說明
1	PGX044CA	M5GAEKC085	有軸、行程40mm、總高450mm
2	PGX044CB	M5GAEKC095	有軸、行程50mm、總高460mm

32	MFPV-286-100	PART	轉向管	Sleerer	1	#28.6
31	MF2350-220-145	PART	彈簧	Spring	1	220L
30	M5GSTAC1268A000	PART	內管		1	#28.6
29	M5GSTAC0268A000	PART	開口內管		1	#28.6
28	M5GSPB-420-8	PART	緩衝墊	Top-Out Bumper	2	
27	M5GFRLC1-0000	PART	SOFI-PLS 外管加工		1	pitch112
26	M5GDPAK03	PART	線控旋轉鈕	Turn Base	1	8h
25	M5GDP7ARL-020	PART	錯簧	Corkscrew Coil Spring	1	20h
24	M5GDP7ARL-013	PART	止付螺絲	Grub screw	1	M3X5L
23	M5GCR7-DBG2000	PART	壓碟環(選孔28.6)	Crown	1	Pitch 112
22	M5GBHCC2	ASSEMBLY	油封	oil seal	2	∅31.6
21	M5GBH9ACB1	PART	NEON-PRO 膠圈套	Bush	2	110L
20	M5GAEMB10	PART	外管套	Bottom-out spacer	1	10L
19	M5GAEKC095	PART	優力膠下座(外牙)	Compression Rod	1	95L
18	M5GAEO0A265	PART	DT固定座(DA, TNL共用)	DT anchorage	1	M26.5x1.0
17	M5GAE-0PB021	PART	彈簧座	Spring Guide	1	
16	M5GACC1220-01	PART	燈架蓋		1	
15	M5GAC9-1004	PART	圓頭六角螺絲	HEX Bolts	2	M310.5X10L
14	M5GAC8-0404	PART	導套	Switch Stand	1	14.8L
13	M5GAC01108	PART	導線螺絲	bolt	2	M310.5
12	M5FUE-2Y14-035	PART	螺絲桿	Shank	1	2-M310.8
11	M5F09-2310-000	PART	定距橡皮	Top-Out Bumper	1	#12X52L Hs40M
10	M5FNL-2311-000	PART	彈簧護套	Spring Sheath	1	T80
9	M5FKD-2723-000	PART	煞車軸	pivot	2	M10X1.25
8	M5FKA-2311-000	PART	定距橡皮	Top-Out Bumper	1	#12X82L Hs40M
7	M5FHJ-2Y70-000	PART	C型扣環	RETAINING RING	2	T80
6	H5GDPFBK12	ASSEMBLY	15'TNL 鎖死棒(雙線牙版)	Travel lock-out Cartridge	1	HW120
5	H5GDPDAR3	ASSEMBLY	TRL 鎖桿組(鉸合金)	Tiny Remote Lockout	1	
4	H5GDPCARL3-1	ASSEMBLY	12"RL 煞車線外線組	Remote Outline Assembly	1	
3	H5GDPBARL6	ASSEMBLY	08"RL 扣環組(高級)	Remote Outline Base	1	
2	H5FNM-2163-100	ASSEMBLY	調整座組 2006	Adjuster Assembly	1	M26.5x1.0
1	1022A-02512C-B	PART	六角承載螺絲(黑)	HEX BOLT	1	M2.5x0.45

Bill of material

MATERIAL	Assembly	QTY	1	MODEL	VERSE RL(40/50)
UNIT	MM	SCALE	0.600	DRAW NO	PGX044CB rev. 1.1
FASHING	TREAT			NAME	爆炸圖
DESIGN	DRAWING	CHECK	CONFIG	APPE	RST