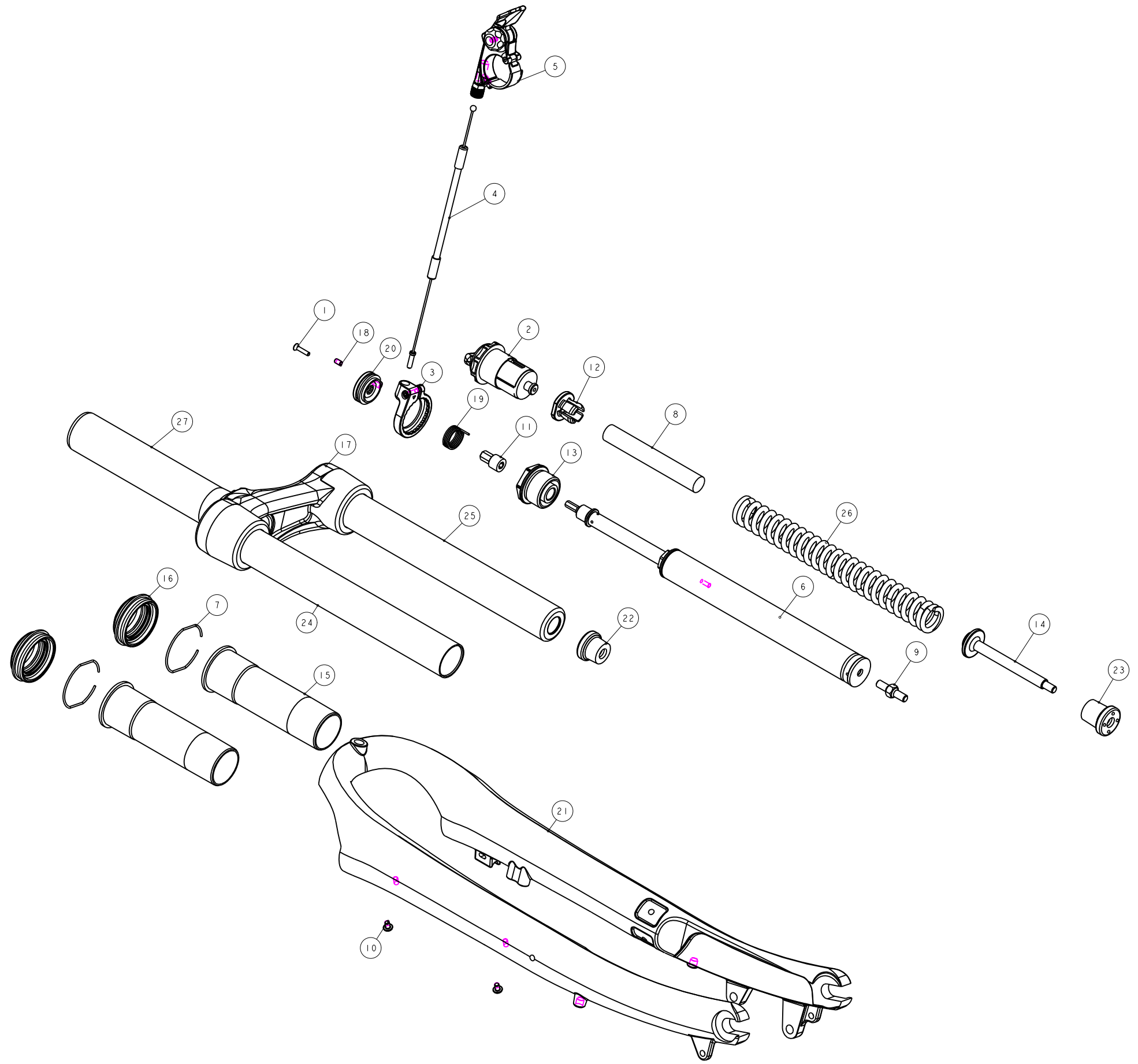


機械加工尺寸一般容許公差					REV.	DATE	DESCRIPTION	CHANGER	CHECK
尺寸	長寬高	尺寸	孔徑	軸徑					
1 < 10	±0.2	1 < 10	+0.2 -0.2	+0 -0.2					
10.001 < 100	±0.3	10.001 < 100	+0.3 -0.3	+0 -0.3					
100.001 < 250	±0.5	100.001 < 250	+0.5 -0.5	+0 -0.5					
250.001 < 500	±0.8	250.001 < 500	+1.0 -0.8	+1.0 -1.0					
500 <	±1.3	500 <	+1.5 -1.3	+1.5 -1.5					



品號第三碼表示年度碼  
PGF為2015, PGG為2016, PGH為2017, 以此類推

NO	PART NO	TYPE	CHINESE NAME	ENGLISH NAME	QTY	NOTE
27	MFPV-286-100	PART	轉向管	Steerer	1	ø28.6
26	MF2350-175-125	PART	彈簧	Spring	1	175L
25	M5GSTAB1215A000	PART	內管	Stanchion	1	ø25.4
24	M5GSTAB0215A000	PART	內管		1	ø25.4X215L
23	M5GSPB-420-5	PART	緩衝墊	Top-Out Bumper	1	20L
22	M5GSPB-415	PART	緩衝墊	Top-Out Bumper	1	15L
21	M5GFRM01-0000	PART	外管加工		1	P112, 25.4
20	M5GDPAK03	PART	總成旋轉組	Turn Base	1	8h
19	M5GDP7ARL-020	PART	彈簧	Corkscrew Coil Spring	1	20h
18	M5GDP7ARL-013	PART	止付螺絲	Grab screw	1	M3X5L
17	M5GCR71DAGA2000	PART	壓縮管座	Crown	1	
16	M5GBHCB2	PART	油封		2	ø35.6Xø35.1X6h
15	M5GBHOABB	PART	長型膠襯套		2	100L
14	M5GAEKC075	PART	微力膠下座(外牙)	Compression Rod	1	75L
13	M5GAE0DA235	PART	TNL固定座	TNL anchorage	1	M23.5x1.0
12	M5GAE-0PB021	PART	彈簧座	Spring Guide	1	
11	M5GACB-0404	PART	導套	Switch Stand	1	14.8L
10	M5GAC01108	PART	導線螺絲	bolt	2	M3X0.5
9	M5FUE-2Y14-005	PART	螺絲桿	Shank	1	2-M5X0.8
8	M5FKA-2311-000	PART	定距橡皮	Top-Out Bumper	1	ø12Xø2L Hs40M
7	M5FA1-2Y71-000	PART	C形扣環		2	ø31Xø1.2
6	H5GDPFBK40	ASSEMBLY	15"TNL 錫死棒(雙線牙版)	Travel lock-out Cartridge	1	øM120
5	H5GDPDAR3	ASSEMBLY	TRL 螺絲組(鋅合金)	Tiny Remote Lockout	1	
4	H5GDPCARL3-1	ASSEMBLY	12"RL 煞車線外總組	Remote Outline Assembly	1	
3	H5GDPBARL6	ASSEMBLY	08"RL 扣環組(高級)	Remote Outline Base	1	
2	H5FNA-2162-100	ASSEMBLY	調整座組 2006	Adjuster Assembly	1	M23.5x1.0
1	I022A-02512C-B	PART	六角承蓋螺絲(黑)	HEX BOLT	1	M2.5x0.45

Bill of material									
MATERIAL	Assembly	QTY	1	MODEL	URBAN RL (40)				
UNIT	MM	SCALE	0.700	DRAW NO	PGX049CA	rev.	1.0		
FASHING	TREAT								
DESIGN	DRAWING	CHECK	CONFIG	APPE	NAME	爆炸圖			
RST									