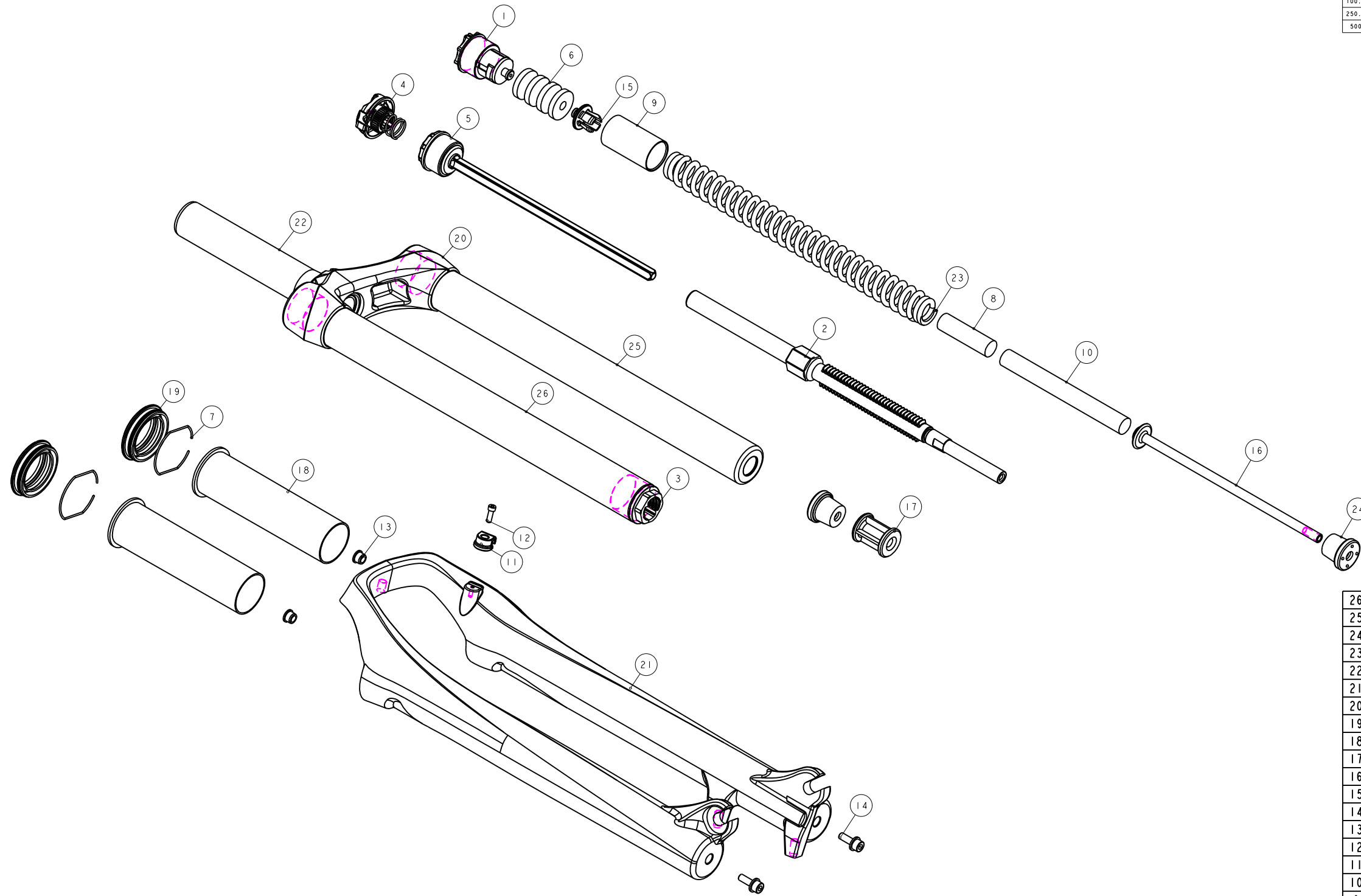


機械加工尺寸一般容許公差					REV.	DATE	DESCRIPTION	CHANGER	CHECK
尺寸	長寬高	尺寸	孔徑	軸徑					
1 < 10	±0.2	1 < 10	+0.2 -0.2	+0.2 -0.2					
10.001 < 100	±0.3	10.001 < 100	+0.3 -0.3	+0.3 -0.3					
100.001 < 250	±0.5	100.001 < 250	+0.5 -0.5	+0.5 -0.5					
250.001 < 500	±0.8	250.001 < 500	+1.0 -1.0	+1.0 -1.0					
500 <	±1.3	500 <	+1.5 -1.5	+1.5 -1.5					



品號第三碼表示年度碼
PGF為2015, PGG為2016, PGH為2017, 以此類推

品號	優力膠下座	規格說明
PGX083DG	M5GAEJC180	無軸 標準頭管徑 行程120mm 總高530mm
PGX083DF	M5GAEJC160	無軸 標準頭管徑 行程100mm 總高510mm
PGX083DE	M5GAEJC140	無軸 標準頭管徑 行程80mm 總高490mm

26	M5GSTAE4345B100	PART	內管	Stanchion	1	Φ32X325L
25	M5GSTAE1345B100	PART	內管	Stanchion	1	Φ32x345L-#
24	M5GSPB-420-8	PART	緩衝墊	Top-Out Bumper	2	
23	M5GSP91260-110	PART	彈簧	Spring	1	
22	M5GRTBA260	ASSEMBLY	轉向管	Steerer	1	
21	M5GFRJC3-1000	PART	2012 OMEGA 29 外管	CASTING	1	總長2小
20	M5GCRC1FDGA2000	PART	12" M29 噴嘴	Crown	1	
19	M5GBHBAEC1	ASSEMBLY	油封	OIL SEAL	2	TBD
18	M5GBHOAEB-1	PART	長型膠圈	Bushing(plastic)	2	125L
17	M5GAEMB30	PART	外管徑	Bottom-Out spacer	1	30L
16	M5GAEJC180	PART	優力膠下座	Compression Rod	1	180L
15	M5GAE-OPB020	PART	彈簧上座	Spring_Guide	1	
14	M5GACC0617-01	PART	圓頭六角螺絲	bolt	2	M5X15L
13	M5GACC0603-01	PART	轉接	ADAPTER	2	
12	M5GAC9-1004	PART	圓頭六角螺絲	HEX Bolts	1	M3X0.5X10L
11	M5GAC8-0731	PART	線扣固定夾	Wire Clip	1	For M3x0.5
10	M5FWS-2311-000	PART	定距橡膠	top out spring bumper	1	Φ13.8X120L
9	M5FUA-2310-000	PART	彈簧護套	Spring Sheath	1	NBR
8	M5FM2-2311-000	PART	定距橡膠	top out spring bumper	1	Φ13.8X48L
7	M5FHJ-2Y70-300	PART	C型噴嘴	CTW	2	TBD
6	M231-D24-L40-60	PART	壓縮橡膠	Compressible buna	1	Φ25.40L-HS50
5	H5GMLC-009-200	ASSEMBLY	調整螺絲	Fixed Guide Assembly	1	
4	H5GMLC-007-286	ASSEMBLY	蓋帽螺絲	Cap Assembly	1	
3	H5GML-009-32	ASSEMBLY	鎖死內管下座	Lock-Out Spacer	1	TBD
2	H5GML-005-72-1	ASSEMBLY	齒輪螺絲(含外管徑)	Hypoid Assembly	1	
1	H5GAE0A29	ASSEMBLY	10" 調整螺絲 Φ32	Adjuster Assembly	1	M29X1.0
NO	PART NO	TYPE	CHINESE NAME	ENGLISH NAME	QTY	NOTE

Bill of material

MATERIAL	ASSEMBLY	Q'TY	1	MODEL	OMEGA 29 ML(80/100/120)	
UNIT	MM	SCALE	0.600	DRAW NO	PGX083DG	rev. 1.0
FASHING		TREAT		NAME	爆炸圖	
DESIGN	DRAWING	CHECK	CONF IG	APPE	RST	