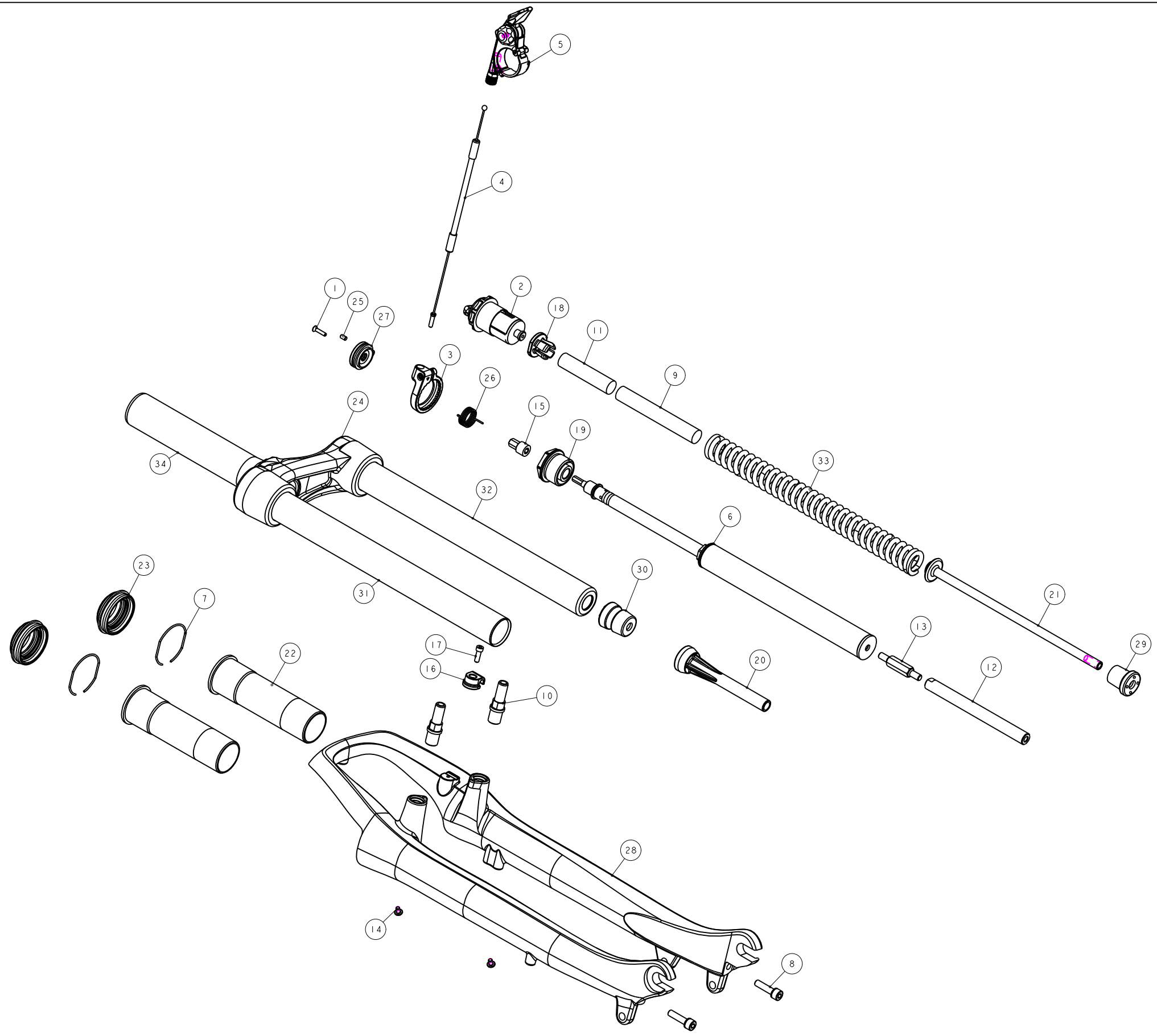


機械加工尺寸一般容許公差					REV.	DATE	DESCRIPTION	CHANGER	CHECK
尺寸	長寬高	尺寸	孔徑	軸徑					
1 < 10	±0.2	1 < 10	+0.2 -0.2	+0.2 -0.2					
10.001 < 100	±0.3	10.001 < 100	+0.3 -0.3	+0.3 -0.3					
100.001 < 250	±0.5	100.001 < 250	+0.5 -0.5	+0.5 -0.5					
250.001 < 500	±0.8	250.001 < 500	+1.0 -1.0	+1.0 -1.0					
500 <	±1.3	500 <	+1.5 -1.5	+1.5 -1.5					



品號第三碼表示年度碼
PGF為2015, PGG為2016, PGH為2017, 以此類推

成品品號	優力膠下座	規格備註
PGX042CB	M5GAEJC170	行程50・總高460
PGX042CC	M5GAEJC180	行程60・總高470

34	MFPV-286-100	PART	轉向管	Sleerer	1	ø28.6
33	MF2350-220-145	PART	彈簧	Spring	1	220L
32	M5GSTAB1270A000	PART	內管	Stanchion	1	ø25.4
31	M5GSTAB0270A000	PART	內管(研磨, 電鍍)	Stanchion	1	ø25.37
30	M5GSPB-503-40	PART	緩衝墊	Top-Out Bumper	1	ø40
29	M5GSPB-420-5	PART	緩衝墊	Top-Out Bumper	1	20L
28	M5GFRX01-0000	PART	外管(10°NEON)		1	pitch112
27	M5GDPAK03	PART	接合旋轉鈕	Turn Base	1	8h
26	M5GDP7ARL-020	PART	鈕簧	Corkscrew Coil Spring	1	20h
25	M5GDP7ARL-013	PART	止付螺絲	Grab screw	1	M3X5L
24	M5GCR71DAGA2000	PART	壓頭管座	Crown	1	
23	M5GBHCBC2	PART	油封		2	ø35.6xø35.1x6h
22	M5GBHOABB	PART	長變膠襯套		2	100L
21	M5GAEJC180	PART	優力膠下座	Compression Rod	1	180L
20	M5GAECB090	PART	外管座	bottom_out space	1	ø7.2xø10x90L
19	M5GAEOA235	PART	TNL固定座	TNL anchorage	1	M23.5x1.0
18	M5GAE-OPB021	PART	彈簧座	Spring Guide	1	
17	M5GAC9-1004	PART	圓頭內六角螺絲	HEX Bolts	1	M3X0.5X10L
16	M5GAC8-0731	PART	鎖式固定夾	Wire Clip	1	For M3x0.5
15	M5GAC8-0404	PART	導套	Switch Stand	1	14.8L
14	M5GAC01108	PART	導線螺絲	bolt	2	M3X0.5
13	M5FWV-2Y14-023	PART	螺絲接管	Shank	1	2-M5X0.8
12	M5FUE-2Y10-105	PART	內螺絲接管	pilman	1	M5X0.8-105L
11	M5F09-2310-000	PART	定距橡皮	Top-Out Bumper	1	ø12X52L Hs40M
10	M5FKD-2723-000	PART	煞車軸	pivot	2	M10X1.25
9	M5FKA-2311-000	PART	定距橡皮	Top-Out Bumper	1	ø12X82L Hs40M
8	M5FA9-2Y11-100	PART	圓頭內六角螺絲	bolt	2	M5X0.8
7	M5FA1-2Y71-000	PART	C形扣環		2	ø31xø1.2
6	H5GDPFBK12	ASSEMBLY	5' TNL 鎖死棒(雙線牙膠)	rel lock-out Cartridge	1	øM120
5	H5GDPDAR3	ASSEMBLY	TRL 撥桿組(鋅合金)	Tiny Remote Lockout	1	
4	H5GDPCARL3-1	ASSEMBLY	12' RL 煞車線外線組	Remote Outline Assembly	1	
3	H5GDPBARL6	ASSEMBLY	08' RL 扣環組(高級)	Remote Outline Base	1	
2	H5FNA-2162-100	ASSEMBLY	調整座組 2006	Adjuster Assembly	1	M23.5x1.0
1	1022A-02512C-B	PART	六角承窩螺絲(黑)	HEX BOLT	1	M2.5x0.45

Bill of material

MATERIAL	Assembly	QTY	1	MODEL	NEON-700C RL(50/60)	
UNIT	MM	SCALE	0.600	DRAW NO	PGX042CC	rev. 1.0
FASHING		TREAT		NAME	爆炸圖	
DESIGN	DRAWING	CHECK	CONFIG	APPE	RST	