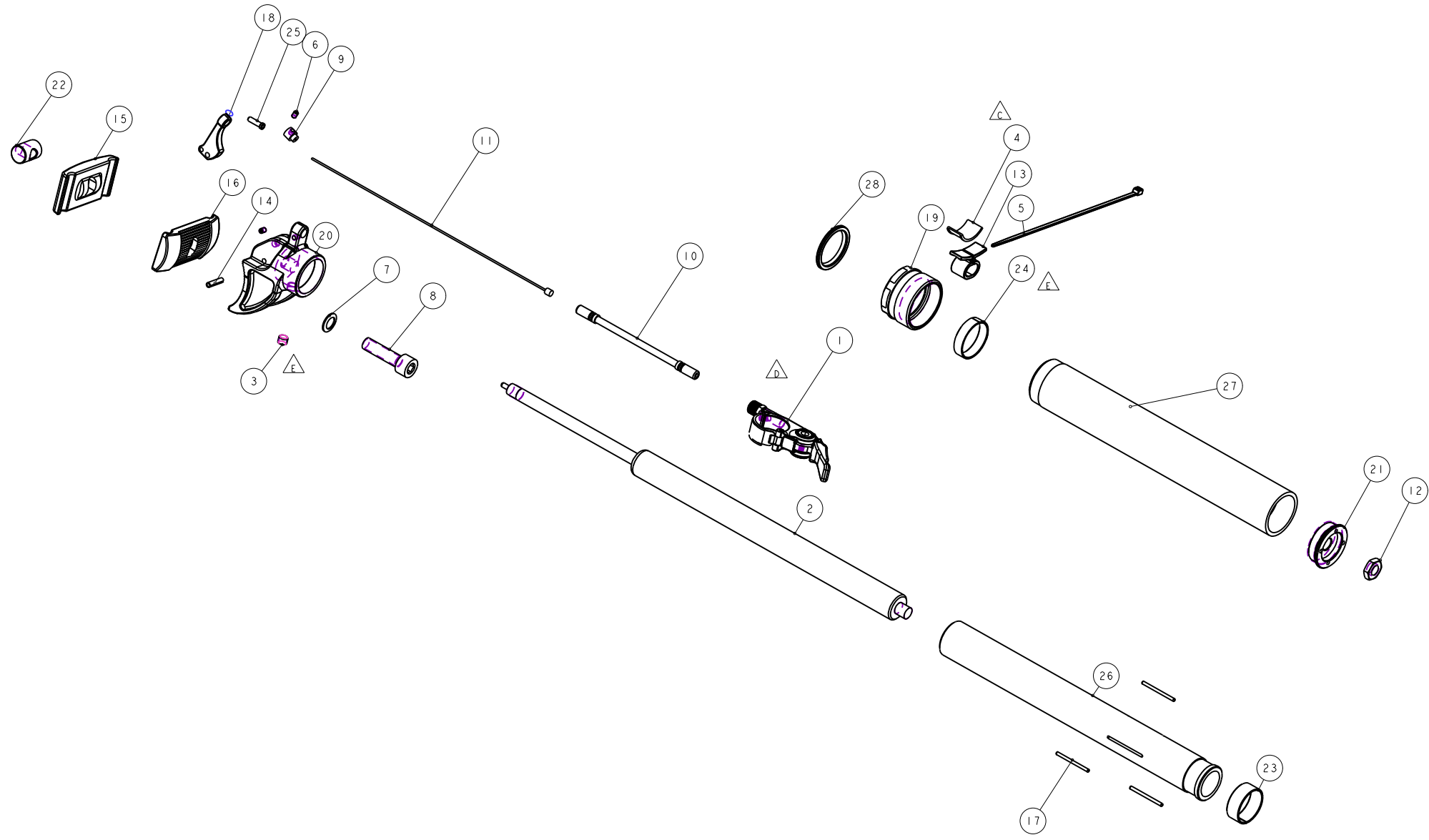


機械加工尺寸一般容許公差					REV.	DATE	DESCRIPTION	CHANGER	CHECK
尺寸	長度	尺寸	孔徑	軸徑	△C	21Oct'14	增加零件MSGAC254	蔡慶豐	
1 <= 10	±0.2	1 <= 10	+0.2 -0.2	+0.2 -0.2	△D	4Nov'14	BOM修改	蔡慶豐	
10.001 <= 100	±0.3	10.001 <= 100	+0.3 -0.3	+0.3 -0.3	△E	20Nov'14	油封固定座更換MSGAECA036 →MSGAECA036 調整更換MSGBHC AKB030 →MSGBHC AKF245 MSGACC0930-01-2PCS 增加MSGACO-0625-1	蔡慶豐	
100.001 <= 250	±0.5	100.001 <= 250	+0.5 -0.5	+0.5 -0.5	△F	7Jan'15	增加鉗套	蔡慶豐	
250.001 <= 500	±0.8	250.001 <= 500	+1.0 -1.0	+1.0 -1.0					
500 <	±1.3	500 <	+1.5 -1.5	+1.5 -1.5					



28	M5RAT-5310-200	PART	油封	Packing	1	
27	M5GST2HH316E000	PART	座管外管	Stanchion	1	345L
26	M5GST2BB219E000	PART	內管	Stanchion	1	067156
25	M5GDP7ARL-017	PART	鋁尾套 (RL用)		1	無
24	M5GBHFAKF245	PART	襯套		1	
23	M5GBHCAKF14	PART	襯套		1	
22	M5GAEFLA012	PART	螺絲固定座		1	
21	M5GAEFDC028	PART	油壓用固定座		1	
20	M5GAEFCA2160-1	PART	鎖附頭		1	
19	M5GAEFCA036	PART	油封固定座		1	TBD
18	M5GAEFBA037	PART	線控拉柄		1	
17	M5GAECOA056	PART	導正鋼條		3	
16	M5GAECA2165	PART	下蓋		1	
15	M5GAECA2164	PART	上蓋		1	
14	M5GACF0918	PART	彈簧銷		1	
13	M5GACF0905	PART	鎖線座 (塑膠)		1	
12	M5GACF0815-08	PART	M8X1.25螺帽		1	
11	M5GACF0715	PART	內線		1	2MM 770L 43mm
10	M5GACF0714	PART	外線組		1	
9	M5GACF0703-01	PART	鎖線座		1	
8	M5GACF0618-4	PART	螺絲		1	
7	M5GACF0618-3	PART	鎖緊墊圈		1	
6	M5GACC0930-01	PART	止付螺絲	Grub screw	2	M3X4L
5	M5GACB0712-01	PART	尼龍紮線帶	NYLON CABLE TIE	1	
4	M5GAC254	PART	撥桿墊片		1	
3	M5GACO-0625-1	PART			1	
2	H5GDPFBD011	PART	100MM汽油壓棒		1	
1	H5GDPDAR4	ASSEMBLY	座管用線控組		1	
NO	PART NO	TYPE	CHINESE NAME	ENGLISH NAME	QTY	NOTE

Bill of material

MATERIAL	ASSEMBLY	Q'TY	MODEL	爆炸圖	
UNIT	MM	SCALE	0.600	DRAW NO	PGF125ZF rev. f
FASHING	TREAT		NAME	座管 (油壓式)	
DESIGN	DRAWING	CHECK	CONF IG	APPE	RST