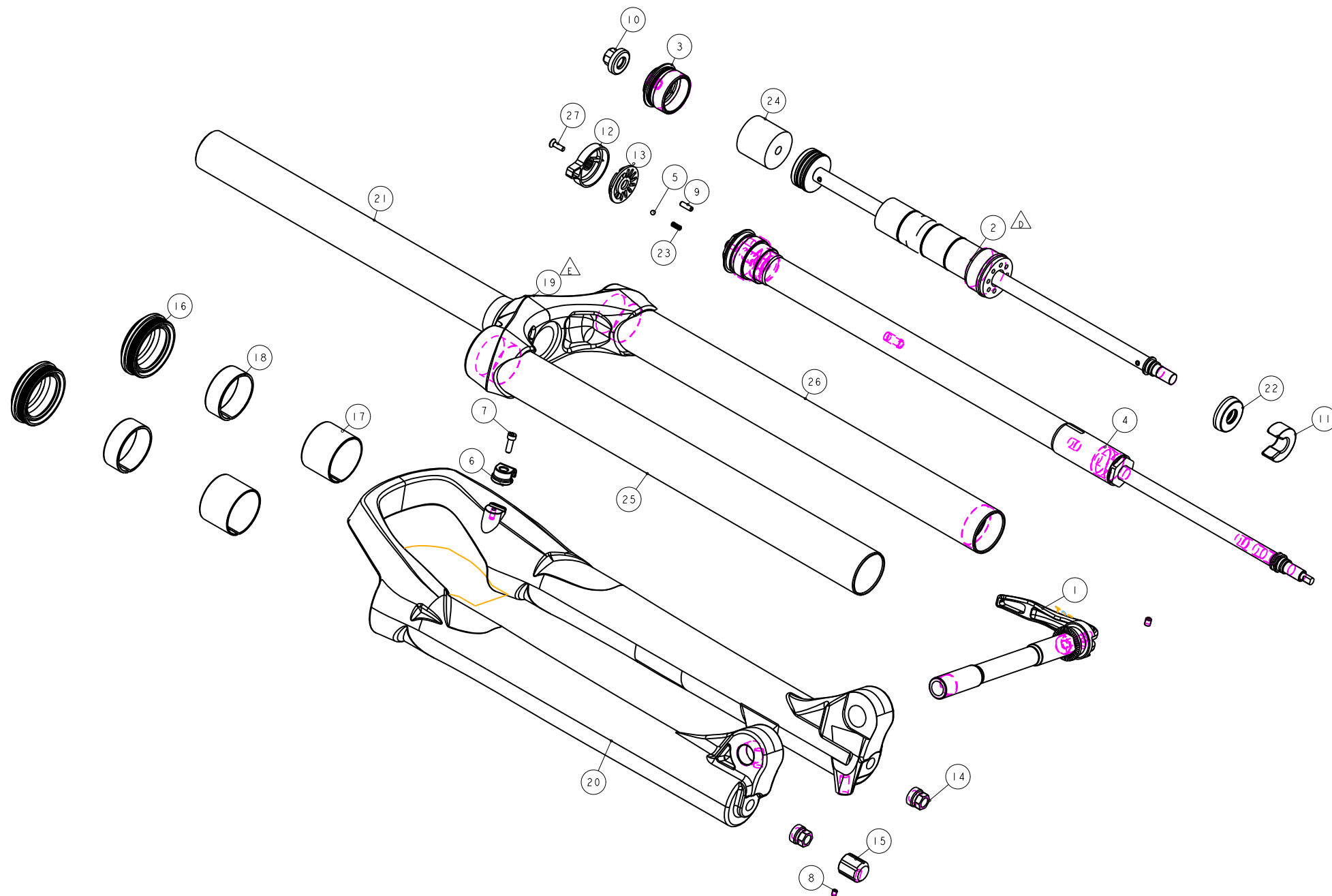


機械加工尺寸一般容許公差					REV.	DATE	DESCRIPTION	CHANGER	CHECK
尺寸	長寬高	尺寸	孔徑	軸徑	△	08 OCT'14	BOM變更	許勝強	
1 <= 10	±0.2	1 <= 10	+0.2 -0.3	+0.2 -0.2	E	08 DEC'14	M5GCR1-FDGA2000 -M5GCR1-FDGA2100	許勝強	
10.001 <= 100	±0.3	10.001 <= 100	+0.3 -0.4	+0.3 -0.3					
100.001 <= 250	±0.5	100.001 <= 250	+0.5 -0.6	+0.5 -0.5					
250.001 <= 500	±0.8	250.001 <= 500	+0.8 -1.0	+0.8 -1.0					
500 <	±1.3	500 <	+1.3 -1.5	+1.3 -1.5					



27	M5R22-2Y11-100	PART	埋頭小螺絲	bolt	1	M3X0.5
26	M5GST2EE345H100	PART	輕量內管 (氣邊)		1	328.6L
25	M5GST2EA345H200	PART	輕量內管 (下無牙)		1	328.6L
24	M5GSPC-72825	PART	發泡優力膠		1	
23	M5GSPC2007-013	PART	彈簧	Spring	1	0.32x2.9x7
22	M5GSPB-5006-2	PART	緩衝墊	Top-Out Bumper	1	φ24Xφ10.5X6L
21	M5GRT9A300	PART	轉向管 (輕量)	Steerer	1	
20	M5GFRED4-1100	PART F	27.5-15外管加工		1	螺絲2个
19	M5GCR1-FDZA2100	PART	OMEGA27.5頭管	Crown	1	
18	M5GBHCAEA-U	PART	上襯套 (鋁)	Up Bushing	2	
17	M5GBHCAEA-D	PART	下襯套 (鋁)	Lower Bushing	2	
16	M5GBH8CEC1	ASSEMBLY	油封		2	TBD
15	M5GAEEAA013	PART	OCRC+回彈調整鈕		1	
14	M5GAEDLA104	PART	底孔固定螺帽		2	
13	M5GAECSS274	PART	鎖死調整座墊片	shim	1	073059-01
12	M5GAEBTN38-1	PART	鎖死調整座	OCR KNOBS	1	073060
11	M5GAE9JP1310	PART	外管座	Bottom-out spacer	1	
10	M5GAE9DA183	PART	氣閘蓋	Air Cap	1	TBD
9	M5GACC1109-01	PART	定位銷		1	3.5x9.5
8	M5GACC0930-01	PART	止付螺絲	Grub screw	1	M3X4L
7	M5GAC9-1004	PART	圓頭內六角螺絲	HEX Bolts	1	M3X0.5X10L
6	M5GAC8-0731	PART	鎖式固定夾	Wire Clip	1	For M3x0.5
5	M5FLX-2730-000	PART	鋼珠	Steel ball	1	TBD
4	H5GDPEBE321-X	ASSEMBLY			1	
3	H5DPCC245	ASSEMBLY	輕量氣閘座組		1	
2	H5GAEFHA298-2	ASSEMBLY	輕量優力膠下座組		1	
1	H5GACE1206	ASSEMBLY	新15軸心		1	
NO	PART NO	TYPE	CHINESE NAME	ENGLISH NAME	QTY	NOTE

成品品號	PGF056FG	PGF056FF	PGF056FE	PGF053FG	PGF053FF	PGF053FE
外管	M5GFRED4-1100			M5GFRED5-1000		
15軸心	H5GACE1206			不使用		
優力膠下座組	H5GAEFHA298-2	H5GAEFHA298-3	H5GAEFHA298-4	H5GAEFHA298-2	H5GAEFHA298-3	H5GAEFHA298-4
行程	120	100	80	120	100	80
說明	CHAMP 27.5-15			CHAMP 27.5		

Bill of material						
MATERIAL	ASSEMBLY	QTY	1	MODEL	CHAMP 27.5-15(80/100/120)	
UNIT	MM	SCALE	0.600	DRAW NO	PGF056FG	rev. E
FASHING		TREAT		DESIGN	RST	
DESIGN	DRAWING	CHECK	CONFIG	APPE	NAME 爆炸圖	