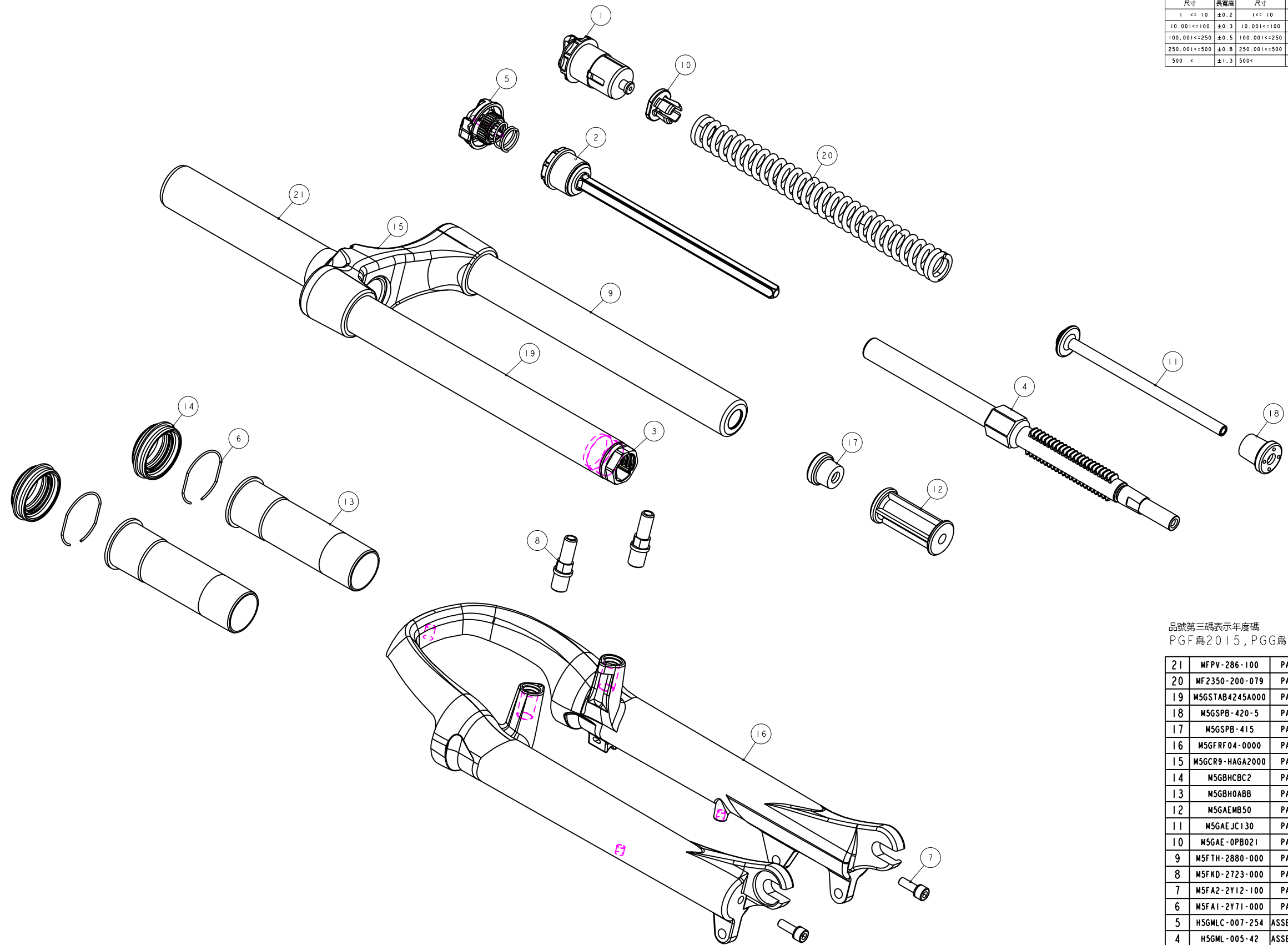


機械加工尺寸一般容許公差					REV.	DATE	DESCRIPTION	CHANGER	CHECK
尺寸	長寬高	尺寸	孔徑	軸徑					
1 < 10	±0.2	1 < 10	+0.2 -0.2	+0.2 -0.2					
10.001 < 100	±0.3	10.001 < 100	+0.3 -0.3	+0.3 -0.3					
100.001 < 250	±0.5	100.001 < 250	+0.5 -0.5	+0.5 -0.5					
250.001 < 500	±0.8	250.001 < 500	+1.0 -1.0	+1.0 -1.0					
500 <	±1.3	500 <	+1.5 -1.5	+1.5 -1.5					



品號第三碼表示年度碼
PGF為2015, PGG為2016, PGH為2017, 以此類推

NO	PART NO	TYPE	CHINESE NAME	ENGLISH NAME	QTY	NOTE
21	MFPV-286-100	PART	轉向管	Steerer	1	φ28.6
20	MF2350-200-079	PART	彈簧	Spring	1	200L
19	M5GSTAB4245A000	PART	內管	Stanchion	1	245L
18	M5GSPB-420-5	PART	緩衝墊	Top-Out Bumper	1	20L
17	M5GSPB-415	PART	緩衝墊	Top-Out Bumper	1	15L
16	M5GFRF04-0000	PART	外殼加工蓋(10°CAPA 24)		1	P120
15	M5GCR9-HAGA2000	PART	120螺絲帽	P120 Crown	1	P120, 25.4
14	M5GBHCBC2	PART	油封		2	φ35.6xφ35.1x6H
13	M5GBH0ABB	PART	長螺絲帽		2	100L
12	M5GAEMB50	PART	外管座	Bottom-Out spacer	1	50L
11	M5GAEJC130	PART	壓力桿下座	Compression Rod	1	130L
10	M5GAE-0PB021	PART	彈簧座	Spring Guide	1	
9	M5FTH-2880-000	PART	內管	Stanchion	1	φ25.4x245L
8	M5FKD-2723-000	PART	旋轉軸	pivot	2	M10x1.25
7	M5FA2-2Y12-100	PART	圓筒六角螺絲	HEX Bolts	2	M5x0.8x15L
6	M5FA1-2Y71-000	PART	C形螺絲		2	φ37xφ1.2
5	H5GMLC-007-254	ASSEMBLY	旋轉螺絲	Cap Assembly	1	
4	H5GML-005-42	ASSEMBLY	齒輪螺絲(含外管座)	Hypoid Assembly	1	
3	H5GML-003-5	ASSEMBLY	鎖死管下座組	LOCK OUT	1	
2	H5GML-002-5	ASSEMBLY	調整螺絲(φ25.4)	Fixed Guide Assembly	1	
1	H5FNA-2162-100	ASSEMBLY	調整螺絲 2006	Adjuster Assembly	1	M23.5x1.0

Bill of material

MATERIAL	Assembly	QTY	1	MODEL	CAPA ML-24" (50)
UNIT	MM	SCALE	0.800	DRAW NO	PGX034DB rev. 1.0
FASHING		TREAT		NAME	爆炸圖
DESIGN	DRAWING	CHECK	CONFIG	APPE	RST