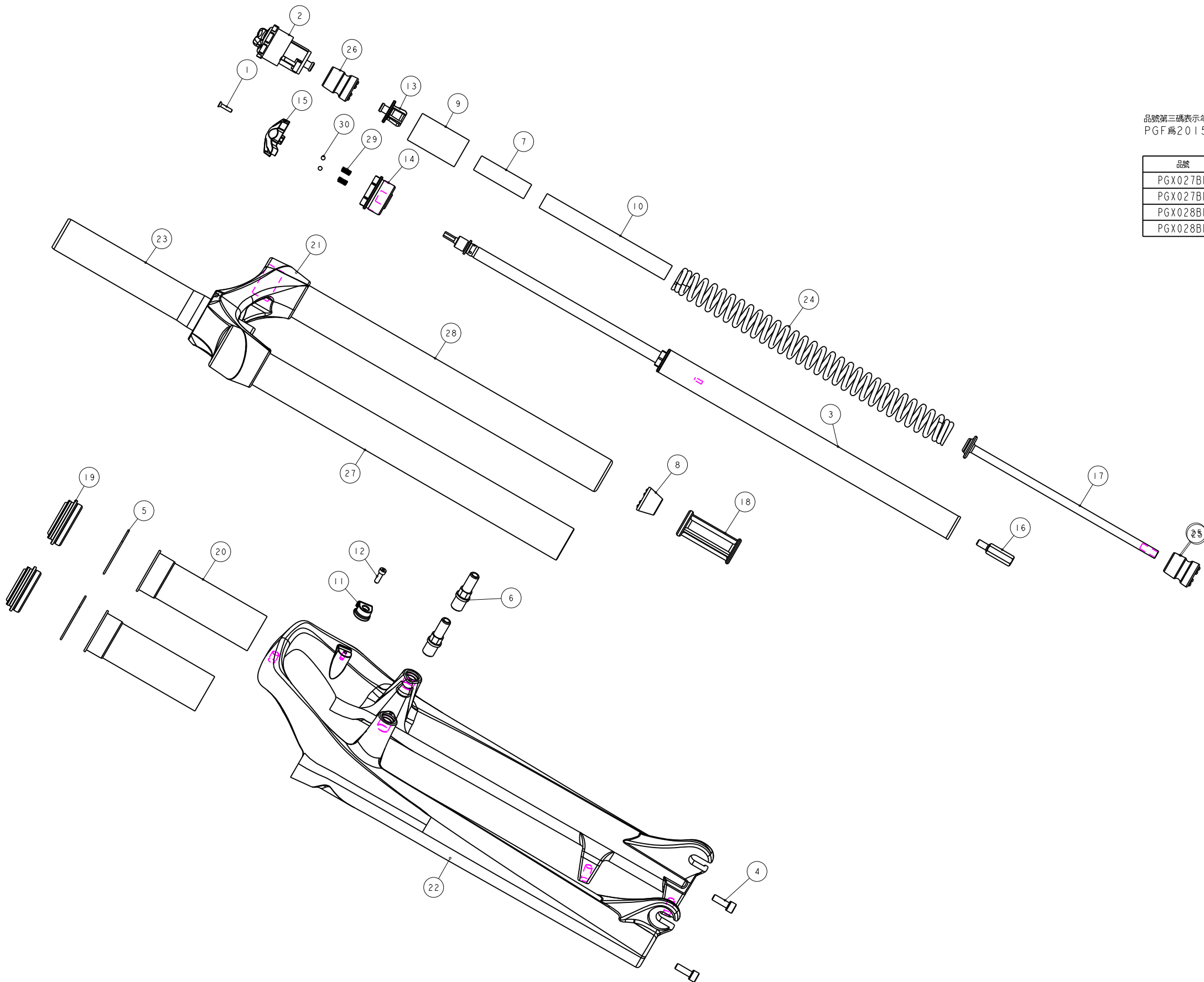


機械加工尺寸一般容許公差					REV.	DATE	DESCRIPTION	CHANGER	CHECK
尺寸	長寬高	尺寸	孔徑	軸徑					
1 < 10	±0.2	1 < 10	+0.2 0	+0 -0.2					
10.001 < 100	±0.3	10.001 < 100	+0.3 0	+0 -0.3					
100.001 < 250	±0.5	100.001 < 250	+0.5 0	+0 -0.5					
250.001 < 500	±0.8	250.001 < 500	+1.0 0	+0 -1.0					
500 <	±1.3	500 <	+1.5 0	+0 -1.5					



品號第三碼表示年度碼  
PGF為2015, PGG為2016, PGH為2017, 以此類推

品號	優力膠下座	煞車軸	外管	規格說明
PGX027BF	M5GAE JC180	M5FKD-2723-000	M5GFRJC2-0000	有軸 行程100mm 總高510
PGX027BE	M5GAE JC160	M5FKD-2723-000	M5GFRJC2-0000	有軸 行程80mm 總高490
PGX028BF	M5GAE JC180	不使用	M5GFRJC2-1000	無軸 行程100mm 總高510
PGX028BE	M5GAE JC160	不使用	M5GFRJC2-1000	無軸 行程80mm 總高490

30	M5K43-2730-000	PART	小鋼珠	Steel ball	2	*4
29	M5K43-2351-000	PART	彈簧	Spring	2	Pitch 0.85
28	M5GSTAD1330A000	PART	內管	Stanchion	1	*30X330L
27	M5GSTAD0330A000	PART	內管	Stanchion	1	*30X330L
26	M5GSPB-503-65	PART	緩衝墊	Top-Out Bumper	1	總高65
25	M5GSPB-503-40	PART	緩衝墊	Top-Out Bumper	1	總高40
24	M5GSP91260-110	PART	彈簧	Spring	1	
23	M5GRTBA260	ASSEMBLY	轉向管	Steerer	1	
22	M5GFRJC2-0000	PART	2012 BLAZE29 外管		1	螺孔2大
21	M5GRCRC1FCGA2000	PART	12" BLAZE29 鋼管	Crown	1	
20	M5GBHEDB1-1	PART	長螺膠套	Bush	2	120
19	M5GBH8CDC2	ASSEMBLY	油封	oil seal	2	*30內徑
18	M5GAEMB50	PART	外管座	Bottom-Out spacer	1	50L
17	M5GAEJC180	PART	優力膠下座	Compression Rod	1	180L
16	M5GAE9L023	PART	螺絲桿	Shank	1	M5X0.8
15	M5GAE8TZ-2	PART	鎖死旋鈕	Lock out adjust cap	1	
14	M5GAEOOA275	PART	DT固定座 (DA, TNL 共用)	DT anchorage	1	M27.5*1.0
13	M5GAE-0PB020	PART	彈簧上座	Spring Guide	1	
12	M5GAC9-1004	PART	圓筒內六角螺絲	HEX Bolts	1	M3X0.5X10L
11	M5GAC8-0731	PART	鎖式固定夾	Wire Clip	1	For M3x0.5
10	M5FWS-2311-000	PART	定距橡皮	top out spring bumper	1	*13.8X120L
9	M5FUA-2310-000	PART	彈簧護套	Spring Sheath	1	NBR
8	M5FQS-2310-000	PART	緩衝墊	Top-Out Bumper	1	15L
7	M5FM2-2311-000	PART	定距橡皮	top out spring bumper	1	*13.8X48L
6	M5FKD-2723-000	PART	煞車軸	pivot	2	M10X1.25
5	M5FHJ-2Y70-100	PART	C型扣環	CTW	2	∅41.9x∅3x36
4	M5FA2-2Y12-100	PART	圓筒內六角螺絲	HEX Bolts	2	M5x0.8x15L
3	H5GDPFBK14	ASSEMBLY	15" TNL 鎖死桿 (雙總分版)	Travel lock-out Cartridge	1	行程120
2	H5FVP-2162-100	ASSEMBLY	調整座組 2006	Adjuster Assembly	1	M27.5X1.0
1	1022A-02512C-B	PART	六角承蓋螺絲 (黑)	HEX BOLT	1	M2.5x0.45
NO	PART NO	TYPE	CHINESE NAME	ENGLISH NAME	QTY	NOTE

Bill of material

MATERIAL	Assembly	QTY	1	MODEL	BLAZE29 TNL (80/100)		
UNIT	MM	SCALE	0.600	DRAW NO	PGX027BF	rev.	1.0
FASHING		TREAT		NAME	爆炸圖		
DESIGN	DRAWING	CHECK	CONFIG	APPE	RST		