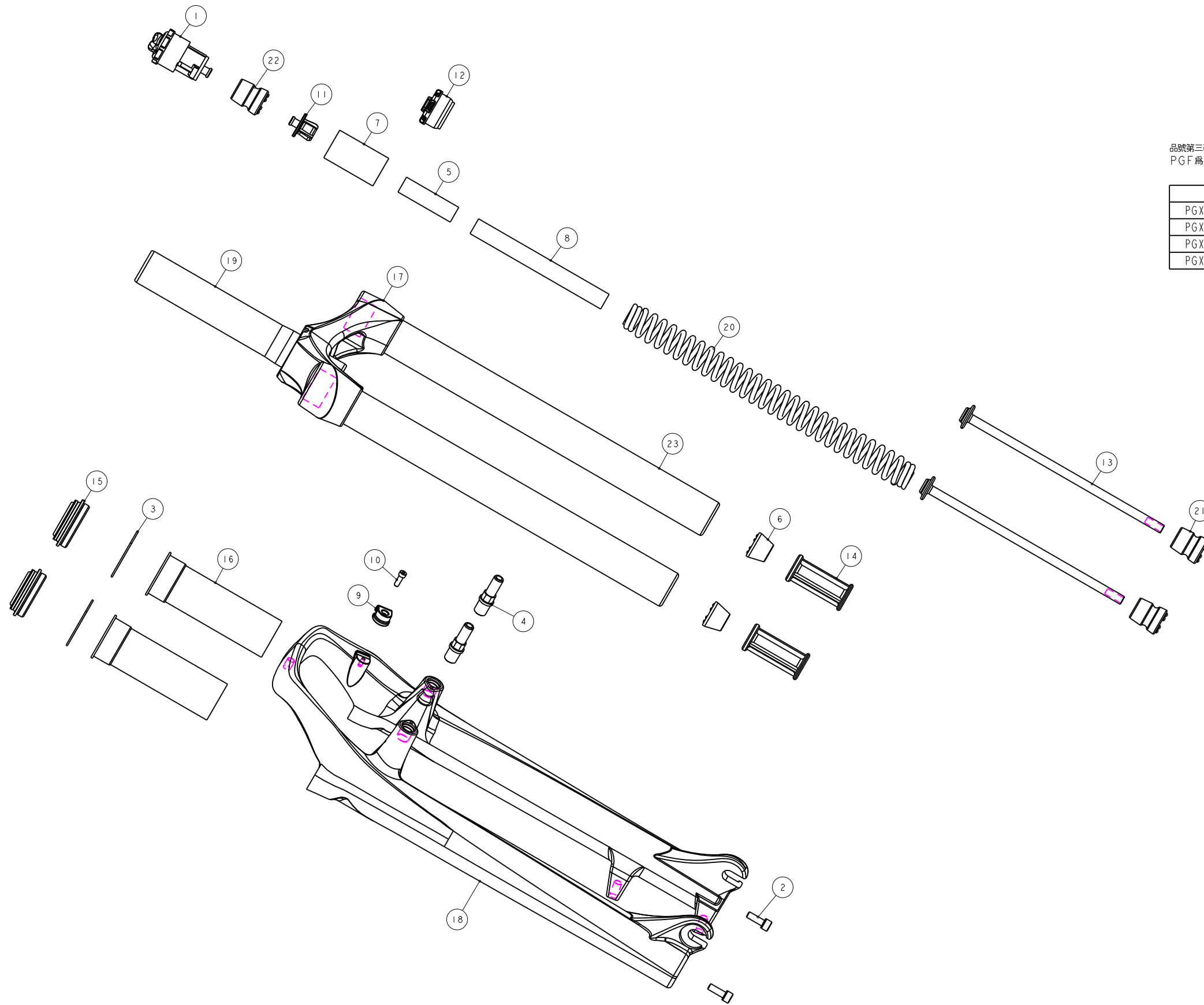


機械加工尺寸一般容許公差					REV.	DATE	DESCRIPTION	CHANGER	CHECK
尺寸	長寬高	尺寸	孔徑	軸徑					
1 < 10	±0.2	1 < 10	+0.2 0	+0 -0.2					
10.001 < 100	±0.3	10.001 < 100	+0.3 0	+0 -0.3					
100.001 < 250	±0.5	100.001 < 250	+0.5 0	+0 -0.5					
250.001 < 500	±0.8	250.001 < 500	+1.0 0	+0 -1.0					
500 <	±1.3	500 <	+1.5 0	+0 -1.5					

品號第三碼表示年度碼
PGF為2015, PGG為2016, PGH為2017, 以此類推

品號	優力膠下座	煞車軸	外管	規格說明
PGX027AF	M5GAEJC180	M5FKD-2723-000	M5GFRJC2-0000	有軸 行程100mm 總高510
PGX027AE	M5GAEJC160	M5FKD-2723-000	M5GFRJC2-0000	有軸 行程80mm 總高490
PGX028AF	M5GAEJC180	不使用	M5GFRJC2-1000	無軸 行程100mm 總高510
PGX028AE	M5GAEJC160	不使用	M5GFRJC2-1000	無軸 行程80mm 總高490



23	M5GSTAD1330A000	PART	內管	Stanchion	2	Φ30X330L
22	M5GSPB-503-65	PART	緩衝墊	Top-Out Bumper	1	總高65
21	M5GSPB-503-40	PART	緩衝墊	Top-Out Bumper	2	總高40
20	M5GSP91260-110	PART	彈簧	Spring	1	
19	M5GRTBA260	ASSEMBLY	轉向管	Steerer	1	
18	M5GFRJC2-0000	PART	2012 BLAZE29 外管		1	螺孔2大
17	M5GCRC1FCGA2000	PART	12" BLAZE29 鋼管	Crown	1	
16	M5GBHEDB1-1	PART	長螺絲膠套	Bush	2	120
15	M5GBH8CD2	ASSEMBLY	油封	oil seal	2	Φ30內徑
14	M5GAEMB50	PART	外管座	Bottom-Out spacer	2	50L
13	M5GAEJC180	PART	優力膠下座	Compression Rod	2	180L
12	M5GAEDMG275	PART	防護蓋	Dust cap	1	TBD
11	M5GAE-OPB020	PART	彈簧上座	Spring Guide	1	
10	M5GAC9-1004	PART	鋼管內六角螺絲	HEX Bolts	1	M3X0.5X10L
9	M5GAC8-0731	PART	鎖式固定夾	Wire Clip	1	For M3x0.5
8	M5FWS-2311-000	PART	定距橡皮	top out spring bumper	1	Φ13.8X120L
7	M5FUA-2310-000	PART	彈簧護套	Spring Sheath	1	NBR
6	M5FQS-2310-000	PART	緩衝墊	Top-Out Bumper	2	15L
5	M5FM2-2311-000	PART	定距橡皮	top out spring bumper	1	Φ13.8X48L
4	M5FKD-2723-000	PART	煞車軸	pivot	2	M10X1.25
3	M5FHJ-2Y70-100	PART	C型扣環	CTW	2	Φ41.9xΦ3x36
2	M5FA2-2Y12-100	PART	鋼管內六角螺絲	HEX Bolts	2	M5x0.8x15L
1	M5FVP-2162-100	ASSEMBLY	調整座組	Adjuster Assembly	1	M27.5X1.0
NO	PART NO	TYPE	CHINESE NAME	ENGLISH NAME	QTY	NOTE

Bill of material

MATERIAL	Assembly	QTY	1	MODEL	BLAZE29 T(80/100)	
UNIT	MM	SCALE	0.600	DRAW NO	PGX027AF	rev. 1.0
FASHING		TREAT		NAME	爆炸圖	
DESIGN	DRAWING	CHECK	CONFIG	APPE	RST	