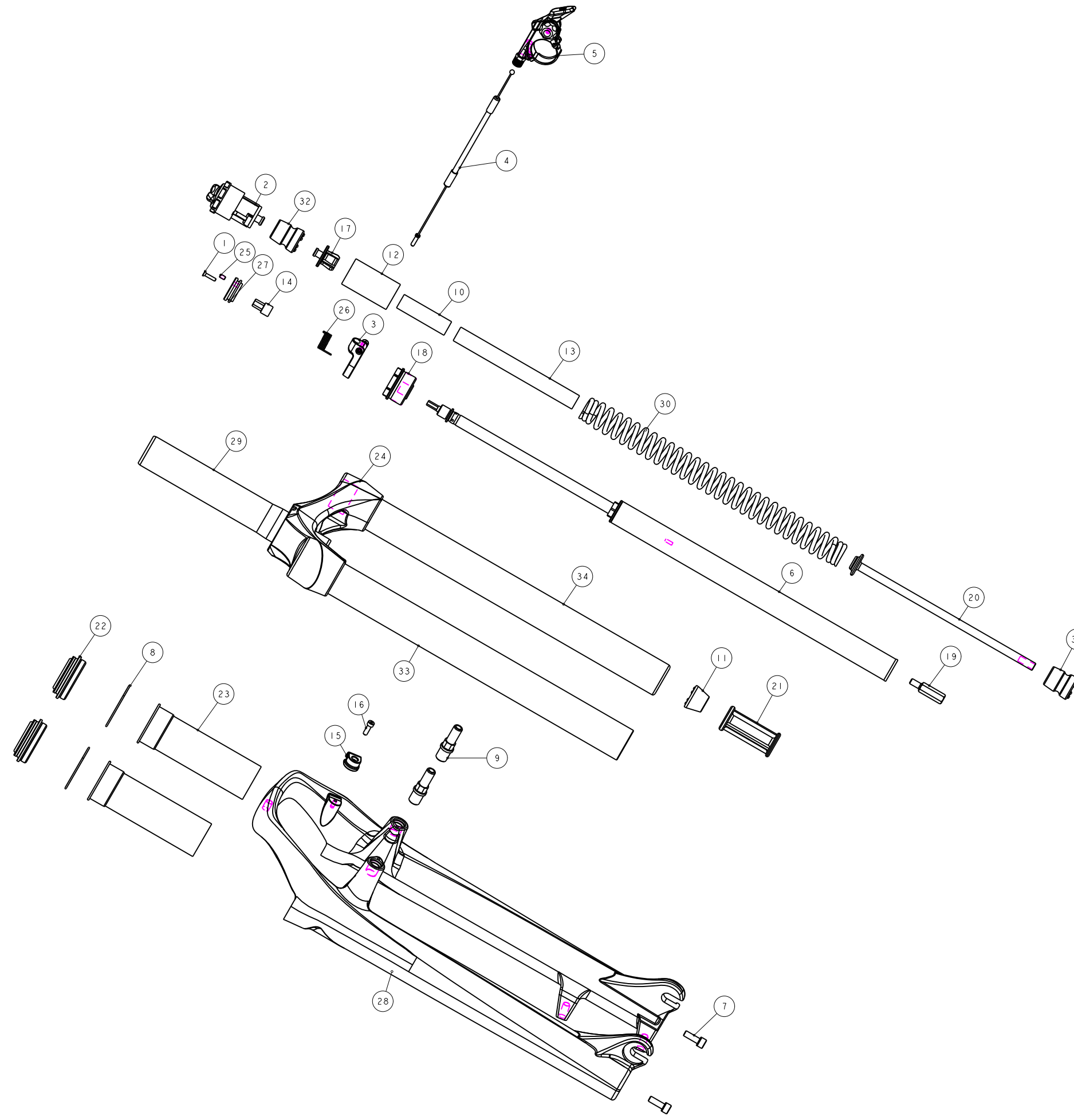


機械加工尺寸一般容許公差					REV.	DATE	DESCRIPTION	CHANGER	CHECK
尺寸	長寬高	尺寸	孔徑	軸徑					
1 <= 10	±0.2	1 <= 10	+0.2 0	+0 -0.2					
10.001 <= 100	±0.3	10.001 <= 100	+0.3 0	+0 -0.3					
100.001 <= 250	±0.5	100.001 <= 250	+0.5 0	+0 -0.5					
250.001 <= 500	±0.8	250.001 <= 500	+1.0 0	+0 -1.0					
500 <	±1.3	500 <	+1.5 0	+0 -1.5					



品號第三碼表示年度碼  
PGF 為 2015, PGG 為 2016, PGH 為 2017, 以此類推

品號	優力膠下座	煞車軸	外管	規格說明
PGX027CF	M5GAEJC180	M5FKD-2723-000	M5GFRJC2-0000	有軸 行程100mm 總高510
PGX027CE	M5GAEJC160	M5FKD-2723-000	M5GFRJC2-0000	有軸 行程80mm 總高490
PGX028CF	M5GAEJC180	不使用	M5GFRJC2-1000	無軸 行程100mm 總高510
PGX028CE	M5GAEJC160	不使用	M5GFRJC2-1000	無軸 行程80mm 總高490

34	M5GSTAD1330A000	PART	內管	Stanchion	1	Φ30X330L
33	M5GSTAD0330A000	PART	內管	Stanchion	1	Φ30X330L
32	M5GSPB-503-65	PART	緩衝墊	Top-Out Bumper	1	總高65
31	M5GSPB-503-40	PART	緩衝墊	Top-Out Bumper	1	總高40
30	M5GSP91260-110	PART	彈簧	Spring	1	
29	M5GRBA260	ASSEMBLY	轉向管	Steerer	1	
28	M5GFRJC2-0000	PART	2012 BLAZE29 外管		1	螺孔2大
27	M5GDPAK03	PART	總控旋轉鈕	Turn Base	1	8h
26	M5GDP7ARL-020	PART	錯簧	Corkscrew Coil Spring	1	20h
25	M5GDP7ARL-013	PART	止付螺絲	Grab screw	1	M3X5L
24	M5GCRCIFCGA2000	PART	12"BLAZE29 鋼管座	Crown	1	
23	M5GBHEDB1-1	PART	長型膠套	Bush	2	120
22	M5GBH8CDC2	ASSEMBLY	油封	oil seal	2	Φ30內徑
21	M5GAEMB50	PART	外管座	Bottom-Out spacer	1	50L
20	M5GAEJC180	PART	優力膠下座	Compression Rod	1	180L
19	M5GAE9L023	PART	螺絲桿	Shank	1	M5X0.8
18	M5GAE0DA275	PART	DT固定座 (DA, TNL 共用)	DT anchorage	1	M27.5x1.0
17	M5GAE-0PB020	PART	彈簧上座	Spring Guide	1	
16	M5GAC9-1004	PART	圓筒內六角螺絲	HEX Bolts	1	M3X0.5X10L
15	M5GAC8-0731	PART	鐵式固定夾	Wire Clip	1	For M3x0.5
14	M5GAC8-0404	PART	彈簧	Switch Stand	1	14.8L
13	M5FWS-2311-000	PART	定距橡皮	top out spring bumper	1	Φ13.8X120L
12	M5FUA-2310-000	PART	彈簧護套	Spring Sheath	1	NBR
11	M5FOS-2310-000	PART	緩衝墊	Top-Out Bumper	1	15L
10	M5FM2-2311-000	PART	定距橡皮	top out spring bumper	1	Φ13.8X48L
9	M5FKD-2723-000	PART	煞車軸	pivot	2	M10X1.25
8	M5FHJ-2Y70-100	PART	C型扣環	CTW	2	Φ41.9xΦ3x36
7	M5FA2-2Y12-100	PART	圓筒內六角螺絲	HEX Bolts	2	M5x0.8x15L
6	H5GDPFBK14	ASSEMBLY	15"TNL 鎖死棒 (雙鎖牙版)	Travel lock-out Cartridge	1	行程120
5	H5GDPDR3	ASSEMBLY	TRL 鎖死棒 (鋅合金)	Tiny Remote Lockout	1	
4	H5GDPCARL3-1	ASSEMBLY	12"RL 煞車線外線組	Remote Outline Assembly	1	
3	H5GDPBARL6	ASSEMBLY	08"RL 扣環組 (高級)	Remote Outline Base	1	
2	H5FVP-2162-100	ASSEMBLY	調整座組 2006	Adjuster Assembly	1	M27.5X1.0
1	1022A-02512C-B	PART	六角承頂螺絲 (黑)	HEX BOLT	1	M2.5x0.45
NO	PART NO	TYPE	CHINESE NAME	ENGLISH NAME	QTY	NOTE

Bill of material

MATERIAL	Assembly	QTY	1	MODEL	BLAZE29 RL(80/100)	
UNIT	MM	SCALE	0.550	DRAW NO	PGX027CF	rev. 1.0
FASHING		TREAT		NAME	爆炸圖	
DESIGN	DRAWING	CHECK	CONFIG	APPE	RST	