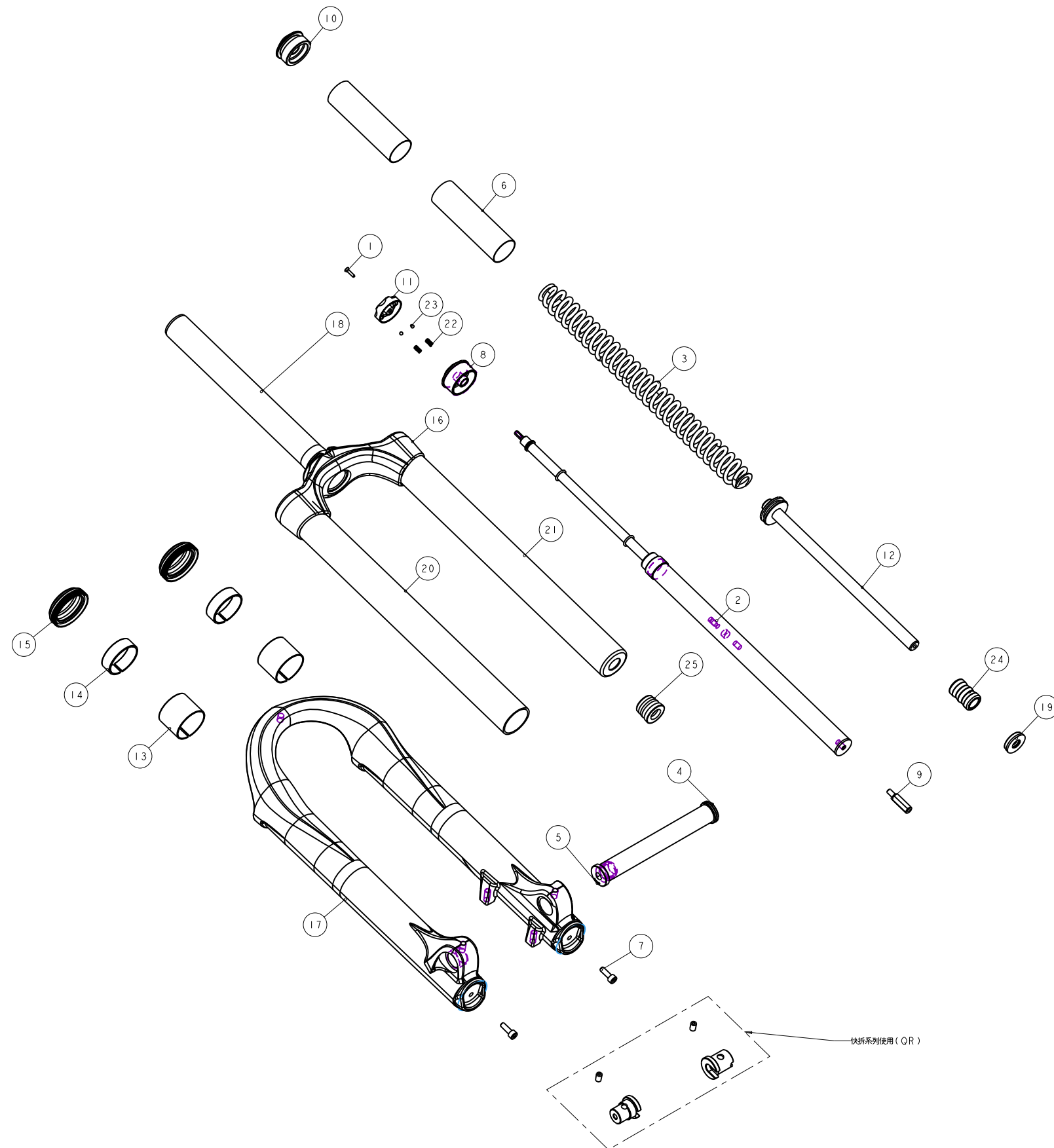


機械加工尺寸一般容許公差					REV.	DATE	DESCRIPTION	CHANGER	CHECK
尺寸	長度	尺寸	孔徑	軸徑					
1 <= 10	±0.2	1 <= 10	+0.2 0	0 -0.2					
10.001 <= 100	±0.3	10.001 <= 100	+0.3 0	0 -0.3					
100.001 <= 250	±0.5	100.001 <= 250	+0.5 0	0 -0.5					
250.001 <= 500	±0.8	250.001 <= 500	+1.0 0	0 -1.0					
500 <	±1.3	500 <	+1.5 1.0	0 -1.5					



NOTE :  
 1 : 此圖面共用於STORM SUPER全系列  
 2 : 除優力膠下座組、20軸心及快拆組需依列表更換外，其餘料件皆為共用

成品品號	20軸心組料件	快拆組料件	優力膠下座	規格說明
PGE004KM	M5FBE-2922-400(軸心)*1 M5FBE-2Y42-200(固定螺)*1	/	MGAECA240	行程180mm·總高560·20軸心(TA)
PGE004KL	M5FBE-2922-400(軸心)*1 M5FBE-2Y42-200(固定螺)*1	/	MGAECA220	行程160mm·總高540·20軸心(TA)
PGE004KJ	M5FBE-2922-400(軸心)*1 M5FBE-2Y42-200(固定螺)*1	/	MGAECA200	行程140mm·總高520·20軸心(TA)
PGE005KM	/	M5FD9-2140-100(左軸套)*1 M5FD9-2141-100(右軸套)*1 M5GAC06010(螺絲)*2	MGAECA240	行程180mm·總高560·快拆(QR)
PGE005KL	/	M5FD9-2140-100(左軸套)*1 M5FD9-2141-100(右軸套)*1 M5GAC06010(螺絲)*2	MGAECA220	行程160mm·總高540·快拆(QR)
PGE005KJ	/	M5FD9-2140-100(左軸套)*1 M5FD9-2141-100(右軸套)*1 M5GAC06010(螺絲)*2	MGAECA200	行程140mm·總高520·快拆(QR)

25	M5X51-2311-000	PART	螺絲墊	Top-Out Bumper	1	041462-B
24	M5T51-2310-000	PART	螺絲墊	Top-Out Bumper	1	.
23	M5K43-2730-000	PART	小鋼珠	Steel ball	2	#4
22	M5K43-2351-000	PART	彈簧	Spring	2	Pitch 0.85
21	M5GSTEF1365B100	PART	內管	stanchion	1	#36X320L
20	M5GSTEF0365B100	PART	內管	stanchion	1	#36X320L
19	M5GSPB-5006-2	PART	螺絲墊	Top-Out Bumper	1	#24X#10.5X6L
18	M5GRTG26000-1	PART	轉內管	STEERER	1	#28.6 260L
17	M5GFRB91-0000	PART	外管襯材	Outer Leg	1	PI38 #36
16	M5GCR81GFZA2000	PART	138級油封管套(橡膠圈)	Crown	1	
15	M5GBH8CFC1	ASSEMBLY	油封36內管用	Oil Seal	2	TBD
14	M5GBH8AFF-U	PART	上襯套	Up Bushing	2	
13	M5GBH8AFF-D	PART	下襯套	Lower Bushing	2	
12	M5GAECA240	PART	優力膠下座	Compression Rod	1	
11	M5GAEAZ034	PART	調整螺絲帽	Cap	1	
10	M5GAE9NA335	PART	內管上蓋	Cap	1	066287
9	M5GAE9L023	PART	螺絲螺母	Shank	1	M5X0.8
8	M5GAE9DZ335	PART	DT固定座(DA, TNL共用)	DT anchorage	1	
7	M5GAC6002	PART	螺絲內六角螺帽(NYSEAL)	bolt(NYSEAL)	2	M5X0.8X15L
6	M5GAC-100-30	PART	彈簧襯套	Spring Sheath	2	NBR
5	M5FBE-2Y42-200	PART	固定螺	Bolt	1	TBD
4	M5FBE-2922-400	PART	軸心	Twenty Axis	1	#20X151L
3	M5F51-2359-000	PART	彈簧(150-170mm)	Spring	1	066330
2	H5GDP88D180	ASSEMBLY	六角螺絲螺母	Rebound adjust Cartridge	1	TBD
1	I022A-02512C-B	PART	六角螺絲螺母(重)	HEX BOLT	1	M2.5x0.45
NO	PART NO	TYPE	CHINESE NAME	ENGLISH NAME	QTY	NOTE

Bill of material

MATERIAL	ASSEMBLY	Q'TY	1	MODEL	I4'STORM SUPER-TA(Travel 180mm)	
UNIT	MM	SCALE	0.400	DRAW NO	PGE004KM-	rev. 1.0
FASHING	TREAT			NAME	爆炸圖	
DESIGN	DRAWING	CHECK	CONFIG	APPE	RST	