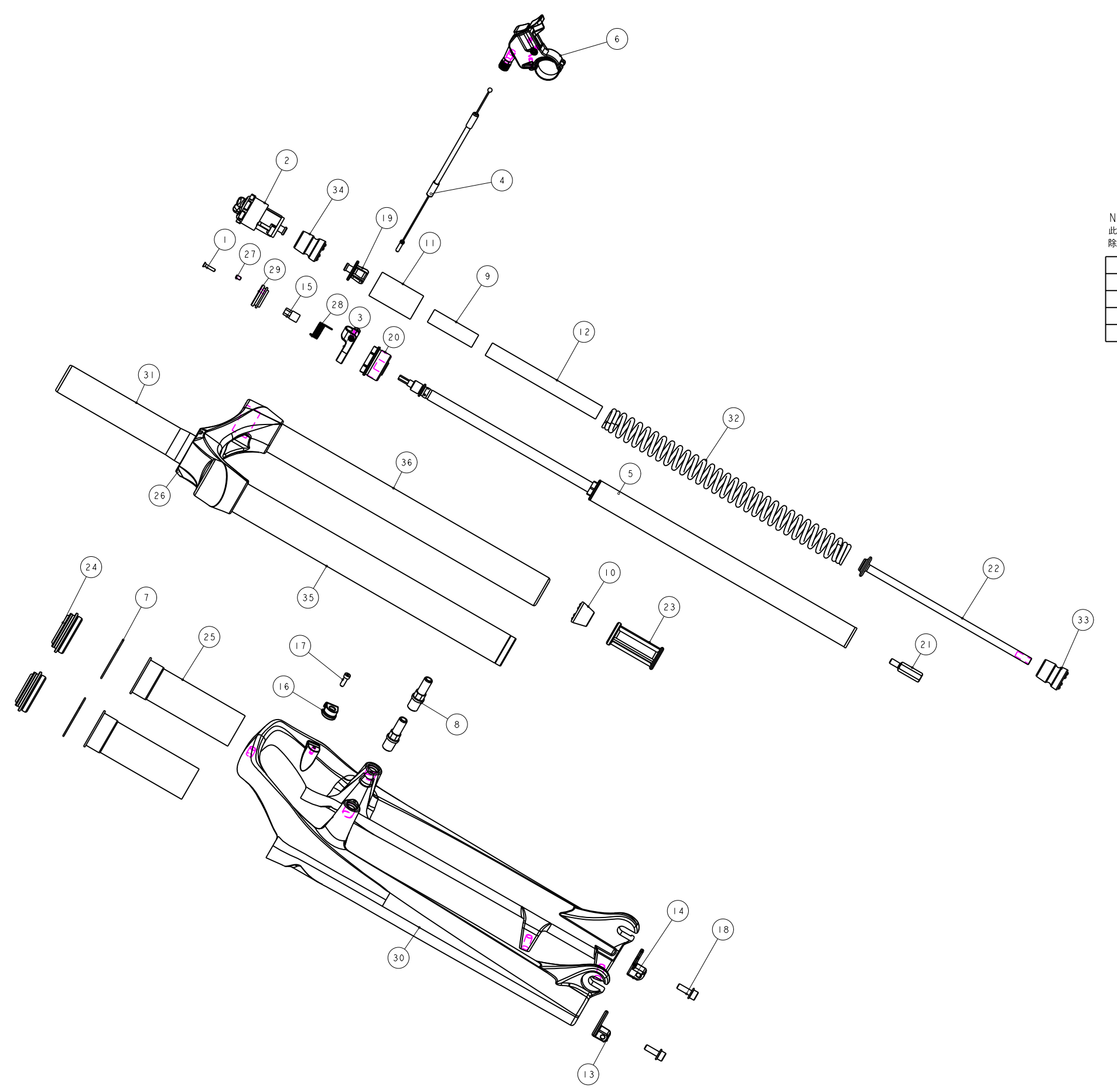


機械加工尺寸一般容許公差					REV.	DATE	DESCRIPTION	CHANGER	CHECK
尺寸	長寬高	尺寸	孔徑	軸徑					
1 < 10	±0.2	1 < 10	+0.2 0	+0.2 0					
10.001 < 100	±0.3	10.001 < 100	+0.3 0	+0.3 0					
100.001 < 250	±0.5	100.001 < 250	+0.5 0	+0.5 0					
250.001 < 500	±0.8	250.001 < 500	+1.0 0	+1.0 0					
500 <	±1.3	500 <	+1.5 0	+1.5 0					



NOTE:
此圖面共用於PULSE 29 RL系列(80/100)
除表內零件需更換外,其餘零件皆共用

品號	優力膠下座	煞車軸	外管	規格說明
PGE081CF	M5GAEJC180	M5FKD-2723-000	M5GFRJC2-0000	有軸 行程100mm 總高510
PGE081CE	M5GAEJC160	M5FKD-2723-000	M5GFRJC2-0000	有軸 行程80mm 總高490
PGE080CF	M5GAEJC180	不使用	M5GFRJC2-1000	無軸 行程100mm 總高510
PGE080CE	M5GAEJC160	不使用	M5GFRJC2-1000	無軸 行程80mm 總高490

36	M5GSTAD1330B000	PART	內管	Stanchion	1	Φ30X330L
35	M5GSTAD0330B000	PART	內管	Stanchion	1	Φ30X330L
34	M5GSPB-503-65	PART	緩衝墊	Top-Out Bumper	1	總高65
33	M5GSPB-503-40	PART	緩衝墊	Top-Out Bumper	1	總高40
32	M5GSP91260-110	PART	彈簧	Spring	1	
31	M5GRTBA260	ASSEMBLY	轉向管	Sleever	1	
30	M5GFRJC2-0000	PART	2012 BLAZE29 外管		1	螺孔2大
29	M5GDPAK03	PART	線控旋轉鈕	Turn Base	1	8h
28	M5GDP7ARL-020	PART	錯簧	Corkscrew Coil Spring	1	20h
27	M5GDP7ARL-013	PART	止付螺絲	Grub screw	1	M3X5L
26	M5GCRC1FCGA2000	PART	12"BLAZE29端管	Crown	1	
25	M5GBHEDB1-1	PART	長型膠圈	Bush	2	120
24	M5GBH8C2	ASSEMBLY	油封	oil seal	2	Φ30內徑
23	M5GAE MB50	PART	外管	Bottom-Out spacer	1	50L
22	M5GAEJC180	PART	優力膠下座	Compression Rod	1	180L
21	M5GAE9L023	PART	螺絲桿	Shank	1	M5X0.8
20	M5GAE0DA275	PART	DT固定座(DA, TNL 共用)	DT anchorage	1	M27.5x1.0
19	M5GAE-OPB020	PART	彈簧上座	Spring Guide	1	
18	M5GACC0617-01	PART	圓筒內六角螺絲	bolt	2	M5X15L
17	M5GAC9-1004	PART	圓筒內六角螺絲	HEX Bolts	1	M3X0.5X10L
16	M5GAC8-0731	PART	鎖式固定夾	Wire Clip	1	For M3x0.5
15	M5GAC8-0404	PART	導套	Switch Stand	1	14.8L
14	M5GAC1203-106	PART			1	
13	M5GAC1203-105	PART			1	
12	M5FWS-2311-000	PART	定距橡皮	top out spring bumper	1	Φ13.8X120L
11	M5FUA-2310-000	PART	彈簧護套	Spring Sheath	1	NBR
10	M5FQS-2310-000	PART	緩衝墊	Top-Out Bumper	1	15L
9	M5FM2-2311-000	PART	定距橡皮	top out spring bumper	1	Φ13.8X48L
8	M5FKD-2723-000	PART	煞車軸	pivot	2	M10X1.25
7	M5FHJ-2Y70-100	PART	C型扣環	CTW	2	Φ41.9xΦ3x36
6	H5GDPCBR1	ASSEMBLY	2012年一般撥桿組	Remote control Assembly	1	
5	H5GDPCBK14	ASSEMBLY	TNL 鎖死棒(120)	travel lock-out Cartridge	1	行程120
4	H5GDPCARL3-1	ASSEMBLY	12"RL 煞車線外線組	Remote Outline Assembly	1	
3	H5GDP8ARL6	ASSEMBLY	08"RL 扣環組(高級)	Remote Outline Base	1	
2	H5FVP-2162-100	ASSEMBLY	調整座組 2006	Adjuster Assembly	1	M27.5x1.0
1	1022A-02512C-B	PART	六角承蓋螺絲(黑)	HEX BOLT	1	M2.5x0.45
NO	PART NO	TYPE	CHINESE NAME	ENGLISH NAME	QTY	NOTE

Bill of material

MATERIAL	Assembly	QTY	1	MODEL	PULSE29 RL(80/100)	
UNIT	MM	SCALE	0.500	DRAW NO	PGE081CF	rev. 1.0
FASHING		TREAT		NAME	爆炸圖	
DESIGN	DRAWING	CHECK	CONFIG	APPE	RST	