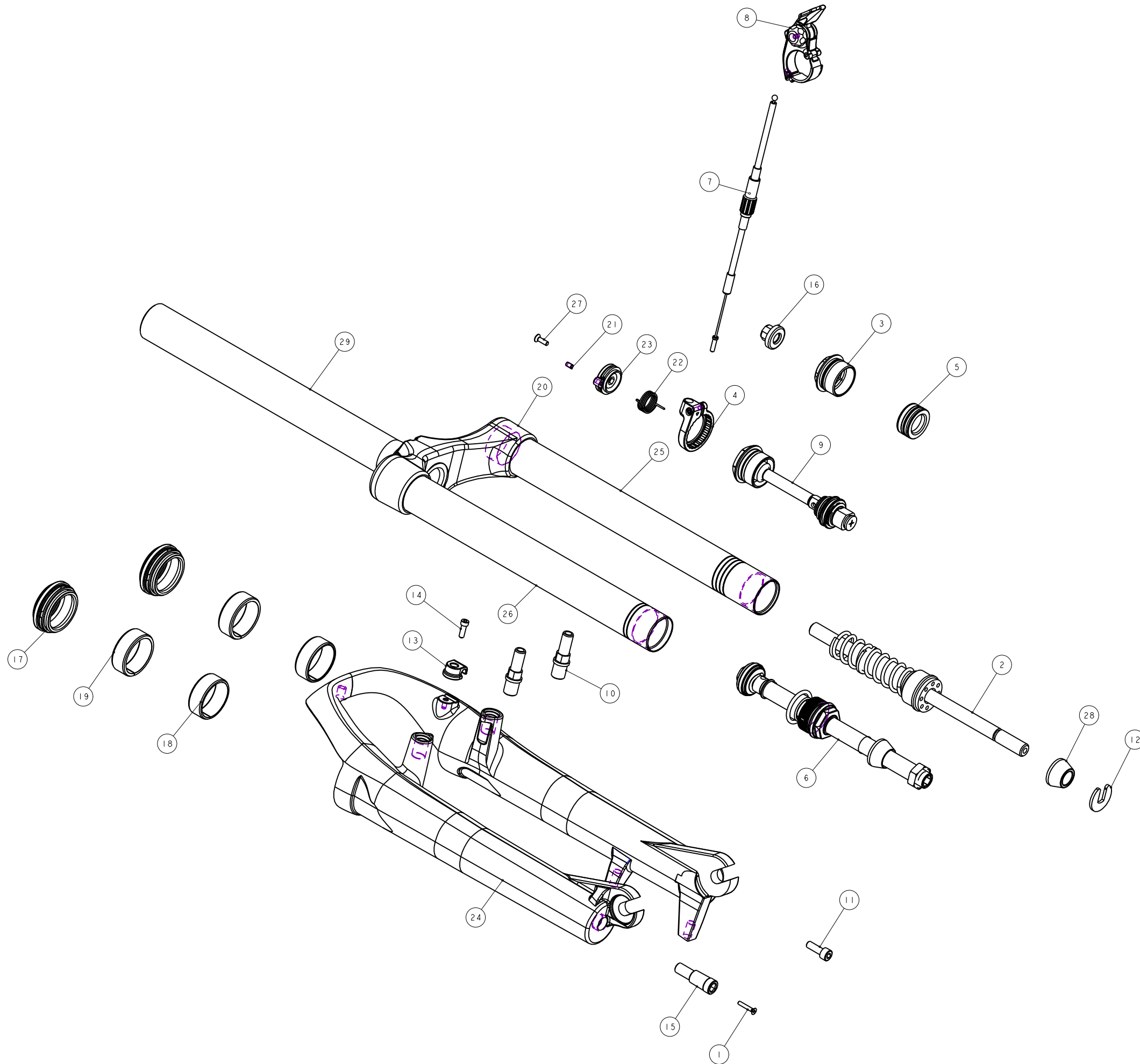


機械加工尺寸一般容許公差					REV.	DATE	DESCRIPTION	CHANGER	CHECK
尺寸	長度	尺寸	孔徑	軸徑					
1 <= 10	±0.2	1 <= 10	+0.2 -0.2	+0 -0					
10.001 <= 100	±0.3	10.001 <= 100	+0.3 -0.3	+0 -0					
100.001 <= 250	±0.5	100.001 <= 250	+0.5 -0.5	+0 -0					
250.001 <= 500	±0.8	250.001 <= 500	+1.0 -1.0	+0 -0					
500 <	±1.3	500 <	+1.5 -1.5	+0 -0					



NO	PART NO	TYPE	CHINESE NAME	ENGLISH NAME	QTY	NOTE
29	MFBV-286-700	PART	轉向管	Steerer	1	040550
28	M5S32-2310-000	PART	緩衝墊	Top-Out Bumper	1	φ21.5x11.5
27	M5R22-2Y11-100	PART	螺絲小螺絲	bolt	1	M3X0.5
26	M5GST2CA268H400	PART	內管 (80mm)	Stanchion	1	067156
25	M5GST2CA268H300	PART	油用內管 (ORION)	Stanchion	1	268L
24	M5GFRU14-0100	PART	FIRST 有軸外管	RAXXON Casting	1	P130 #32
23	M5GDPAK03	PART	總控旋轉組	Turn Base	1	8h
22	M5GDP7ARL-020	PART	彈簧	Corkscrew Coil Spring	1	20h
21	M5GDP7ARL-013	PART	止付螺絲	Grub screw	1	M3X5L
20	M5GCRD-EBZA2000	PART	P125 壓頂	Crown	1	P125.28.6
19	M5GBH9ACF-U	PART	上襯套	Bush-u	2	
18	M5GBH9ACF-D	PART	下襯套	Bush-d	2	
17	M5GBH8CCC1	ASSEMBLY	VOGUE 油封	oil seal	2	T8D
16	M5GAE9DA183	PART	氣筒蓋	Air Cap	1	T8D
15	M5GAE9AZ034	PART	回彈螺絲	Rebound knob	1	
14	M5GAC9-1004	PART	圓筒六角螺絲	HEX Bolts	1	M3X0.5X10L
13	M5GAC8-0731	PART	鎖式固定夾	Wire Clip	1	For M3x0.5
12	M5GAC8-001	PART	下座墊片		1	040968
11	M5GAC6002	PART	圓筒六角螺絲 (NYSEAL)	bolt(NYSEAL)	1	M5X0.8X15L
10	M5FKD-2723-000	PART	煞車軸	pivot	2	M10X1.25
9	H5GDPEAK20B-1	ASSEMBLY	鎖死螺絲組	Lockout Assembly	1	
8	H5GDPDAR1	ASSEMBLY	TRL 螺絲組 (可鎖式)	Tiny Remote Lockout	1	
7	H5GDPDAK08	ASSEMBLY	高級TRL 外螺絲組 (500L)	Remote Outline Assembly	1	
6	H5GDPBAD265-3	ASSEMBLY	FIRST 24 液壓螺絲組	Hydraulic Damping	1	
5	H5GDPBAD24-1	ASSEMBLY	活塞組	PISTON	1	
4	H5GDPBARL6	ASSEMBLY	08'RL 扣環組 (高級)	Remote Outline Base	1	
3	H5GAEBMA250-1	ASSEMBLY	氣筒螺絲組	Fixed Guide	1	
2	H5GAEBJA207	ASSEMBLY	壓力下座組	Compression Rod Assembly	1	
1	I022A-02515	PART	螺絲	Bolt	1	M2.5X0.45X15L

**Bill of material**

MATERIAL	ASSEMBLY	Q'TY	SCALE	MODEL	14' FIRST 24 AIR TRL (60)
UNIT	MM		0.700	DRAW NO	PGE0189C- rev. 1.0
FASHING	TREAT			NAME	爆炸圖
DESIGN	DRAWING	CHECK	CONFIG	APPE	RST