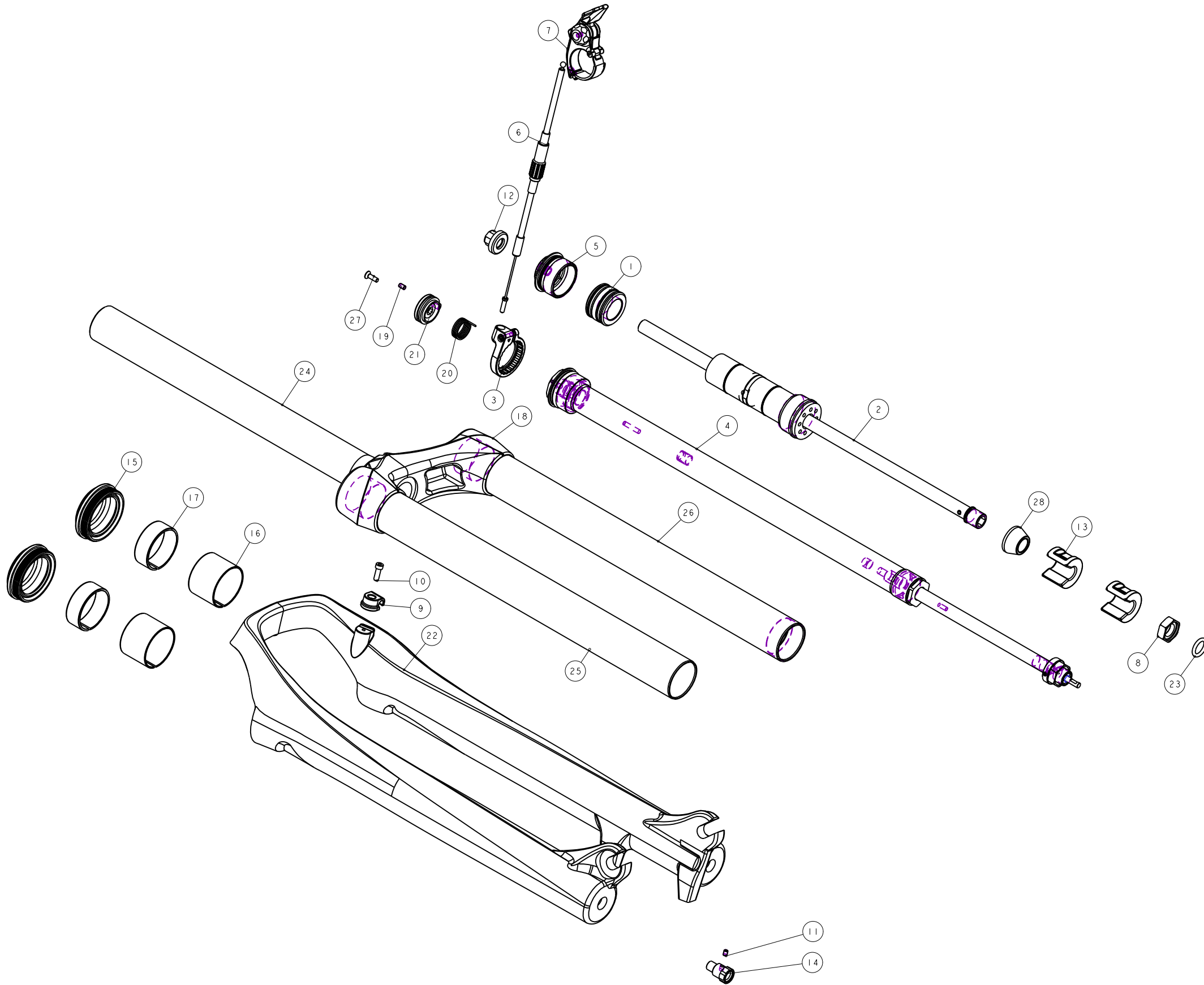


機械加工尺寸一般容許公差					REV.	DATE	DESCRIPTION	CHANGER	CHECK
尺寸	長度	寬度	孔徑	軸徑					
1 <= 10	±0.2	1 <= 10	+0.2 -0	+0 -0.2					
10.001 <= 100	±0.3	10.001 <= 100	+0.3 -0	+0 -0.3					
100.001 <= 250	±0.5	100.001 <= 250	+0.5 -0	+0 -0.5					
250.001 <= 500	±0.8	250.001 <= 500	+1.0 -0	+0 -1.0					
500 <	±1.3	500 <	+1.5 -1.0	+0 -1.5					



備註：此圖面共用下列成品品號

除優力膠下座組須依表替換外，其餘零件皆共用

項目	成品品號	優力膠下座組替換品號	規格說明
1	PGE0559G-	H5GAECA327	無軸·總高530mm·行程120mm
2	PGE0559F-	H5GAECA327-1	無軸·總高510mm·行程100mm
3	PGE0559E-	H5GAECA327-2	無軸·總高490mm·行程80mm

28	M5S32-2310-000	PART	緩衝墊	Top-Out Bumper	1	●21.5X11.5
27	M5R22-2Y11-100	PART	埋頭小螺絲	bolt	1	M3X0.5
26	M5GST2EE329H100	PART	輕量內管(氣邊)		1	328.6L
25	M5GST2EA329H200	PART	輕量內管(下無牙)		1	328.6L
24	M5GRT9A300	PART	轉向管(輕量)	Steerer	1	
23	M5GOR8-240-1080	PART	O-RING	O-Ring	1	
22	M5GFRJCI-1200	PART	2012 FIRST29 外管		1	螺孔二大
21	M5GDPAK03	PART	線控旋轉鈕	Turn Base	1	8h
20	M5GDP7ARL-020	PART	鈕簧	Corkscrew Coil Spring	1	20h
19	M5GDP7ARL-013	PART	止付螺絲	Grub screw	1	M3X5L
18	M5GCRC1FDZA2000	PART	2'FIRST29 頭管座	Crown	1	
17	M5GBHCAEA-U	PART	上襯套(鋁)	Up Bushing	2	
16	M5GBHCAEA-D	PART	下襯套(鋁)	Lower Bushing	2	
15	M5GBH8CEC1	ASSEMBLY	油封		2	TBD
14	M5GAECBA010	PART	OCRC 回彈調整旋鈕		1	
13	M5GAE9JP131	PART	外管座	Bottom-out spacer	2	
12	M5GAE9DA183	PART	氣閥蓋	Air Cap	1	TBD
11	M5GACC0930-01	PART	止付螺絲	Grub screw	1	M3X4L
10	M5GAC9-1004	PART	圓頭內六角螺絲	HEX Bolts	1	M3X0.5X10L
9	M5GAC8-0731	PART	鎖式固定夾	Wire Clip	1	For M3x0.5
8	M5GAC66	PART	六角杯型螺帽	Nut	1	M5X0.8六角杯型螺帽
7	H5GDPDARI	ASSEMBLY	TRL 撥桿組(可鎖式)	Triny Remote Lockout	1	
6	H5GDPDAK08	ASSEMBLY	高級TRL外線組(500lb)	Triny Remote Outline Assembly	1	
5	H5GDPCC245	ASSEMBLY	輕量氣閥座組		1	
4	H5GDPCE322-1	ASSEMBLY	OCRC油壓棒		1	
3	H5GDPBARL6	ASSEMBLY	08'RL扣環組(高級)	Triny Remote Outline Base	1	
2	H5GAECA327	ASSEMBLY	輕量優力膠下座組		1	
1	H5GAE0LP32	ASSEMBLY	活塞組	Air Piston	1	

### Bill of material

MATERIAL	ASSEMBLY	Q'TY	UNIT	SCALE	MODEL	14"CHAMP 29 AIR-TRL(80/100/120)
		1	MM	0.650		
FASHING	TREAT				DRAW NO	PGE0559G- rev. 1.0
DESIGN	DRAWING	CHECK	CONFIG	APPE	NAME	爆炸圖
						RST